



# ViewPower Pro

Software

User & Installation Manual

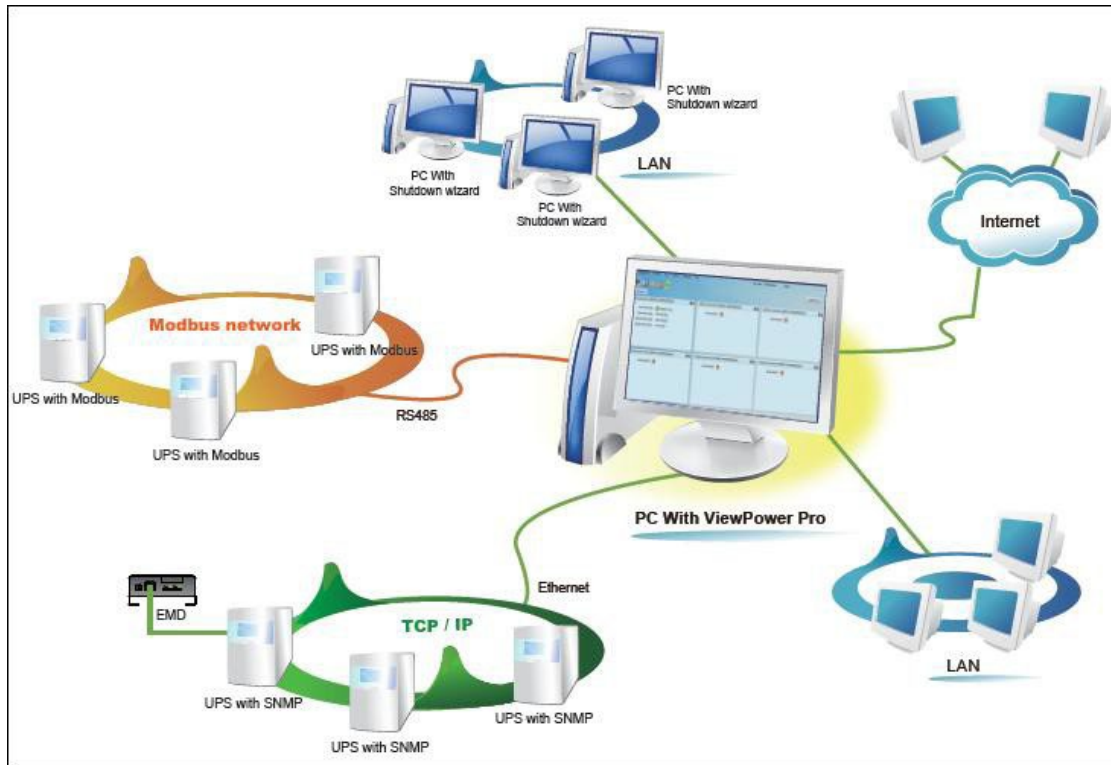
## Table of Contents

<b>ViewPower Pro Overview.....</b>	<b>3</b>
Introduction.....	3
Structure.....	3
Features.....	3
<b>ViewPower Pro Install and Uninstall.....</b>	<b>4</b>
System Requirement.....	4
Software Install.....	4
Software Uninstall.....	9
<b>Service Tray Application.....</b>	<b>9</b>
Start Monitor.....	9
Stop Monitor.....	9
SNMP Manager.....	10
Configuration.....	21
Https.....	22
Software Update.....	23
Open Monitor.....	24
Exit.....	25
<b>ViewPower Pro GUI.....</b>	<b>25</b>
<b>ViewPower Pro Menu.....</b>	<b>25</b>
Configuration.....	25
Schedule.....	34
View.....	36
Format.....	48
Language.....	48
Help.....	48

## ViewPower Pro Overview

### Introduction

ViewPower Pro is an advanced UPS management software which is perfect for home users and enterprises. It can monitor and manage from one to multiple UPSs in a networked environment including LAN, INTERNET and RS485-based networks. Integrated with Shutdown Wizard, it can not only prevent data loss from power outage and safely shutdown systems, but also store programming data and scheduled shut down UPSs. All UPS working data and event records can be kept in local database system.



### Structure

ViewPower Pro includes monitor service, WEB service and tray service.

- **Monitor service:** It is the core of ViewPower Pro software. Monitor service automatically find UPSs in the networks, store UPS working data and event information. It will communicate with UPS, record events, notify users with events, and execute command according to the users' request.
- **WEB service:** It offers Http or Https service for local or remote users. Users can manage and monitor UPSs for realtime status, information and modify UPS setting parameters via browser such as IE and Firefox.
- **Tray service:** It is management tool for ViewPower Pro software. It includes start monitor, stop monitor, SNMP manager and so on.

### Features

- Centralized control and monitor up to 1000 UPSs via SNMP or Modbus networks.
- Offers WEB service to allow remote monitoring service via Intranet or Internet.
- Offers quick overview for UPS monitoring in Text and Graphic view.
- Offers user-customized background picture for graphic view with simple drag and drop.

- Scheduled UPS on/off, battery test, and scheduled wake on LAN programs.

## ViewPower Pro Install and Uninstall

### *System Requirement*

- 1 GB physical memory at least (2 GB is recommended)
- 2 GB hard disk space at least
- Administrator authority is required
- More than 16bit colors and 800 x 600 or above resolution display is recommended
- TCP/IP protocol must be installed for network management
- Platforms supported by software are listed below:
  - » Windows 2000
  - » Windows XP/2003/Vista/2008 (32bit & x64bit)
  - » Windows 7 (32bit & x64bit)
  - » Windows SBS 2011
  - » Linux RedHat 8, 9
  - » Linux RedHat Enterprise AS3, AS5, AS6 (32bit)
  - » Linux RedHat Enterprise AS6 (64bit)
  - » Linux RedHat Enterprise 5.2 (32bit & 64bit)
  - » Linux SUSE 10 (32bit & 64bit)
  - » Linux Cent OS 5.4 (32bit)
  - » Linux Ubuntu 8.X, 9.X, 10.X (32bit)
  - » Linux Ubuntu 10.X (64bit)
  - » Linux Ubuntu 12.04 (32bit & 64bit)
  - » Linux Fedora 5
  - » Linux OpenSUSE 11.2 (32bit & 64bit)
  - » Linux Debian 5.x, 6.x (32bit)
  - » Linux Debian 6.x (64bit)
  - » Mac OS 10.6 (x64bit)
  - » Mac OS 10.7 (x64bit)
  - » olaris 10 for x86 (32bit)

### *Software Install*

#### **Step 1**

Insert the software CD into CD ROM. Installation menu will be automatically displayed, or you can run autorun.exe to start the installation in CD directory.

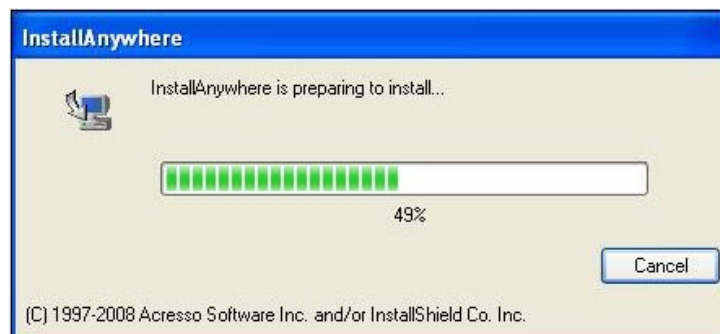


**Step 2**

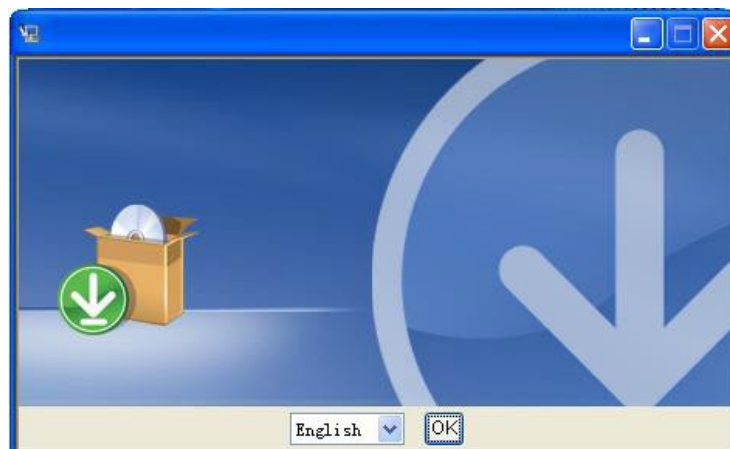
It will show the following screen. Then click "ViewPower Pro" button to start the installation.

**Step 3**

After clicking install, it will display the installation in process.

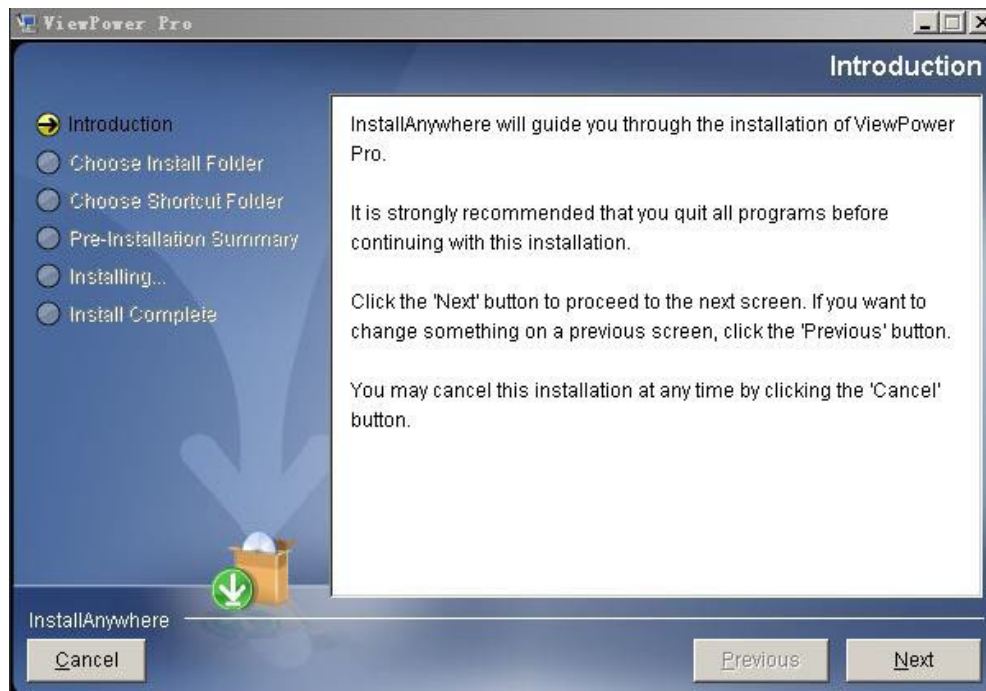
**Step 4**

Choose wanted language and click "OK".

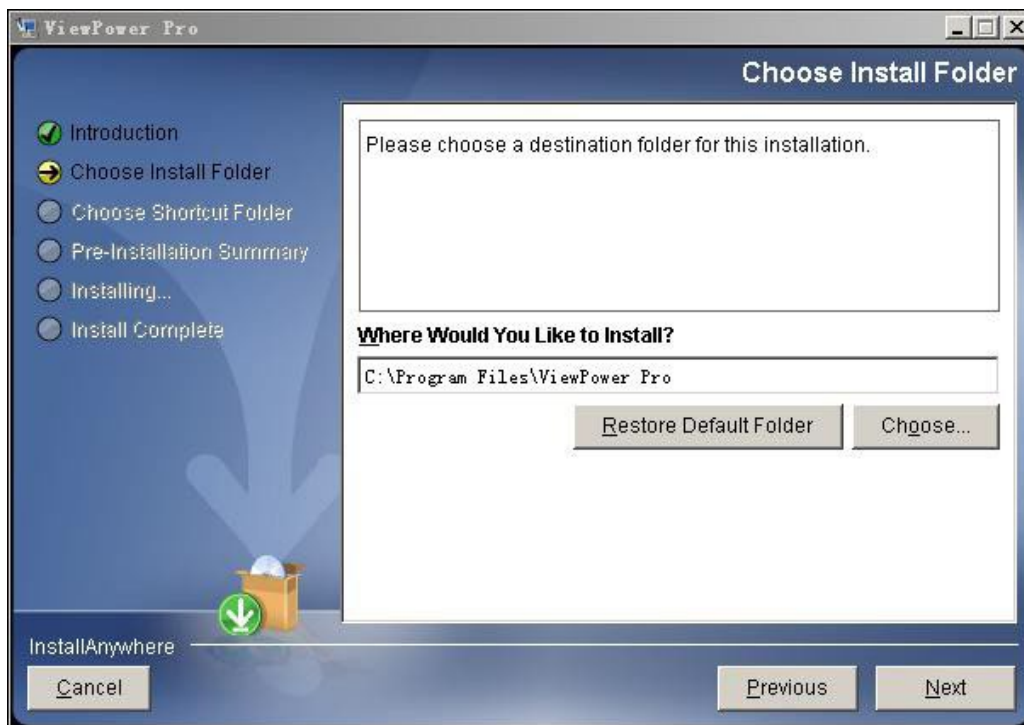


**Step 5**

Click "Next" to proceed to the next screen.

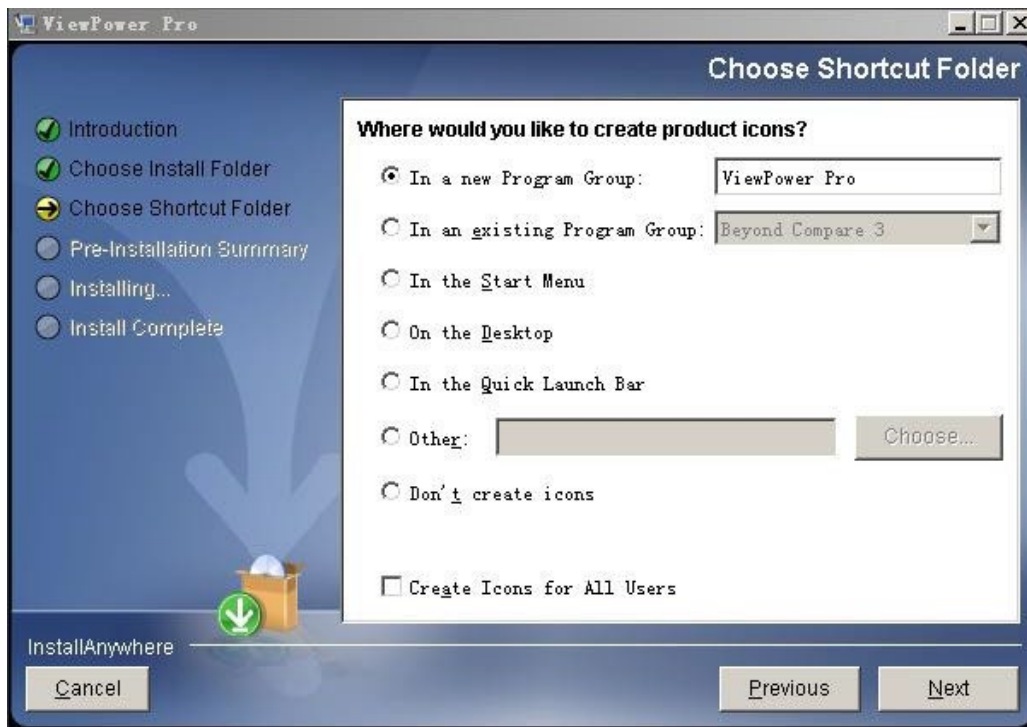
**Step 6**

Click "Choose" button to change the default folder. After choosing the installed folder, click "Next" button.

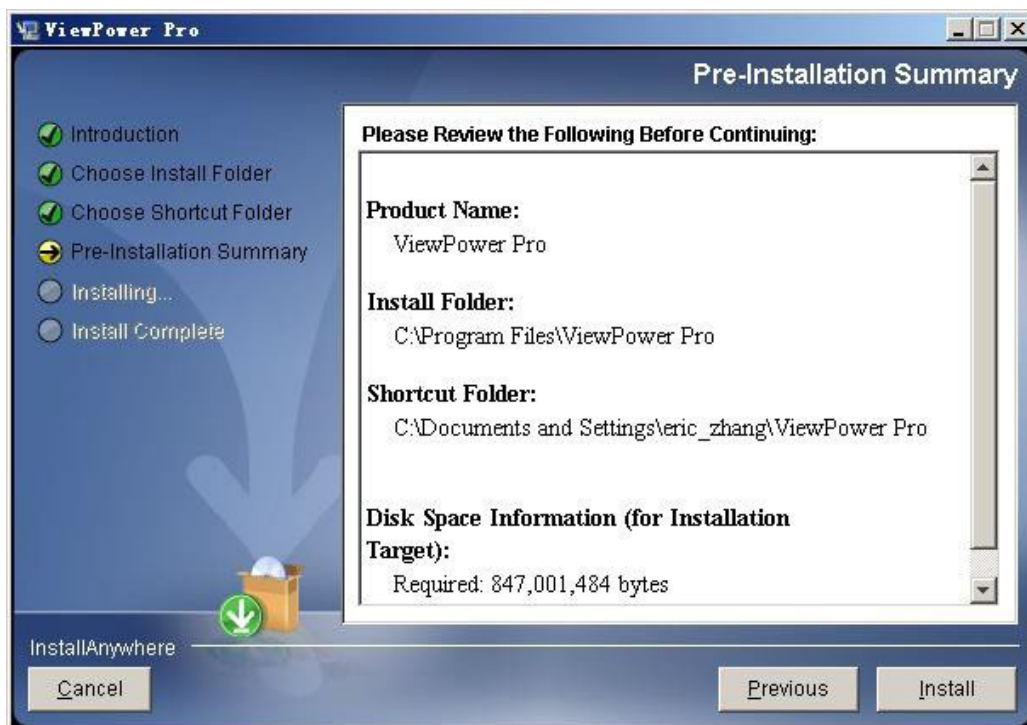


**Step 7**

Choose the shortcut folder and click “Next” button.

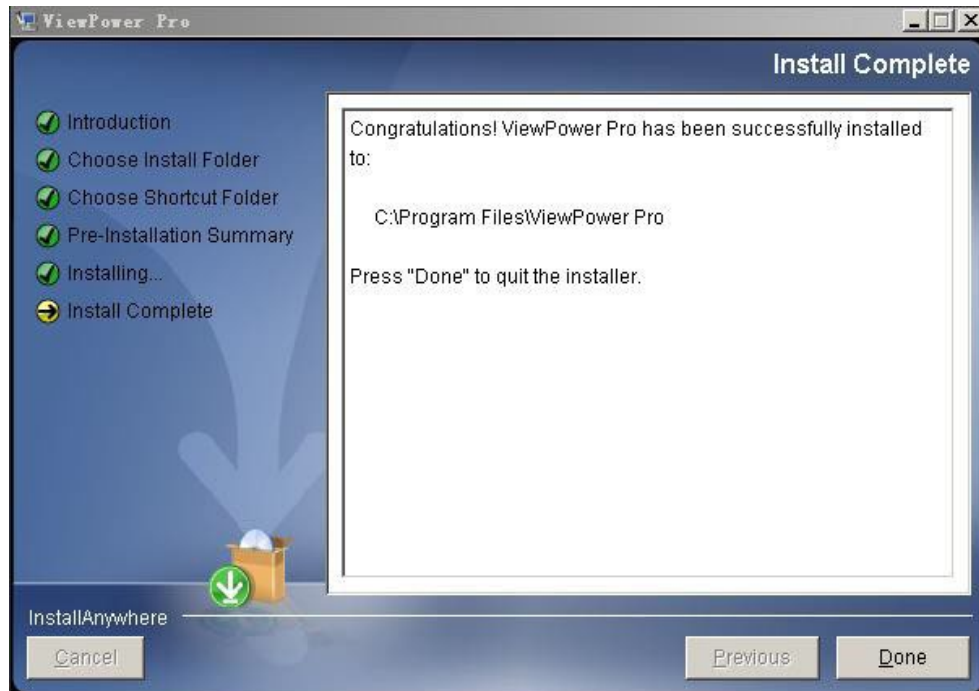
**Step 8**

It will display the software summary before installation. Click “Install” button to start the installation.

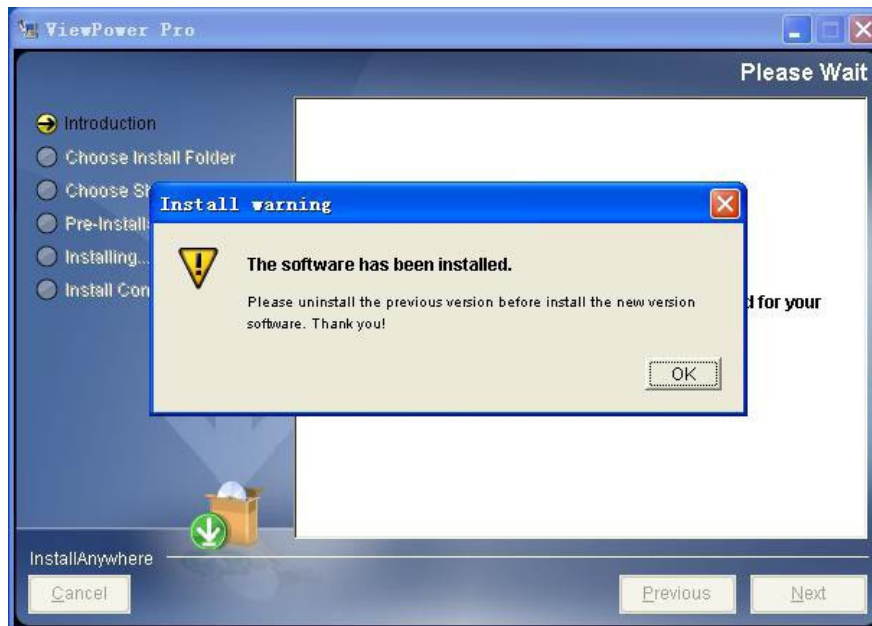


**Step 9**

Click "Done" button to confirm the installation completely.



**Note:** Please uninstall the previous version before install the new version software. If detecting installed ViewPower Pro during installation, it will remind users to uninstall old version first.



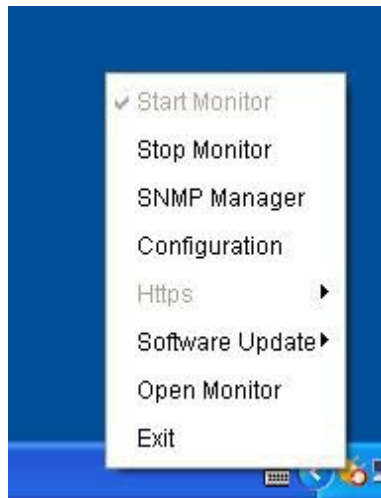


## Software Uninstall

Please choose Start>>All Programs>>ViewPower Pro>>Uninstall. Then follow the onscreen instruction to uninstall the software. Before uninstall software, you must stop all software programs first and then log in as “Administrator”! Otherwise, it can't be uninstalled completely.

## Service Tray Application

The Installer will leave a shortcut icon on your desktop. Simply click the shortcut. Then it will start the software and display an orange plug icon located in taskbar. To launch the GUI, double click the plug icon or choose “Open Monitor” by clicking right button of the mouse. Refer to below diagram. Or, use the Start Menu method; Start>>All Programs>>ViewPower Pro>>ViewPower Pro.



ViewPower Pro icon

### Start Monitor

This software will be automatically activated when installing it as service application. At this time, users can remote monitor UPSs through web browser even though users do not login in operation system.

If service application can not be registered successfully, when starting up tray service, it will automatically activate monitoring application. If it's failed or stopped manually, simply click “Start Monitor” to activate it. “Start Monitor” will check if monitoring application is registered as service application. If it's successfully, this software will be activated from service mode. If not, this software will be activated as monitoring mode. Users can identify the application mode from tray icon as below:

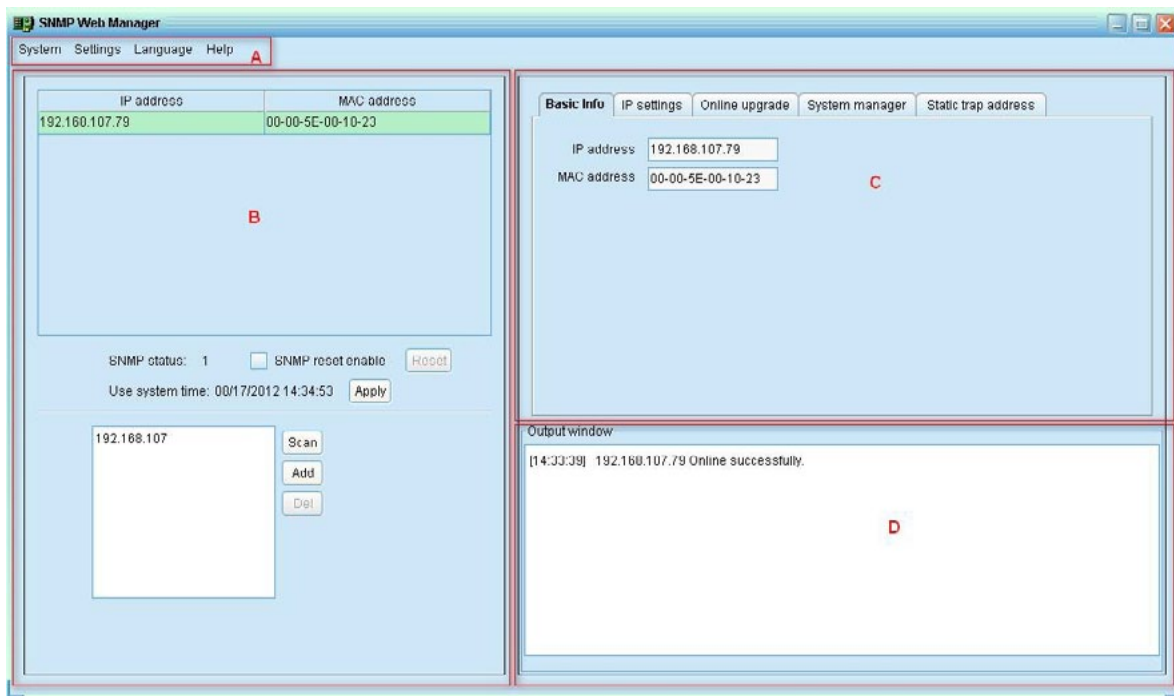
- Monitoring application is not activated successfully: 🚫
- Monitoring application is activated as service mode: 🌟
- Monitoring application is activated as monitoring mode: 🇺🇸

### Stop Monitor

Click “Stop Monitor” to stop monitoring application.

## SNMP Manager

SNMP Manager is a plugin utility for ViewPower Pro to search and operate all SNMP devices in the LAN. Click the “SNMP Manager” to access SNMP management tool. It has four sections as marked in the illustration below:



- A. **Function menu** offers toolset for setting SNMP devices.
- B. **SNMP device list** can list down all SNMP devices with IP address.
- C. **Configuration area** includes IP settings, online upgrade, password management, and static trap address.
- D. **Output window** displays all messages for operations

### SNMP Device List

The default value in window list would be current PC IP address. For example, if IP address of current PC is “192.168.102.10”, it will display “192.168.102” in list when first enabling SNMP Manager.

### Default Configuration

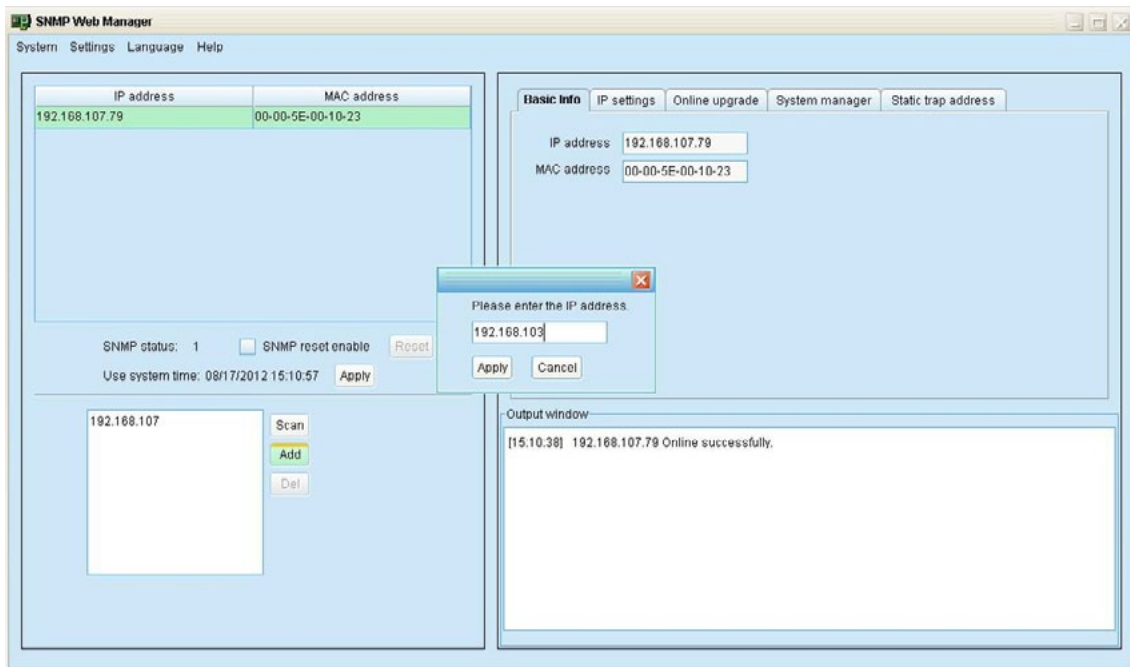
The SNMP web manager is default applied static IP address as 192.168.102.230, default subnet mask as 255.255.255.0, and default gateway as 192.168.102.1. Users can modify IP address or apply DHCP mode through web server of SNMP web pro card, SSH Client or SNMP Web Manager. Default password: 12345678.

### Scan

You may enter specific IP address and then click “Scan” button to search.

### Add

Click “Add” button and it will pop up a window to ask for entering specific IP address. Then, click “Apply” button to add IP address (Subnet).

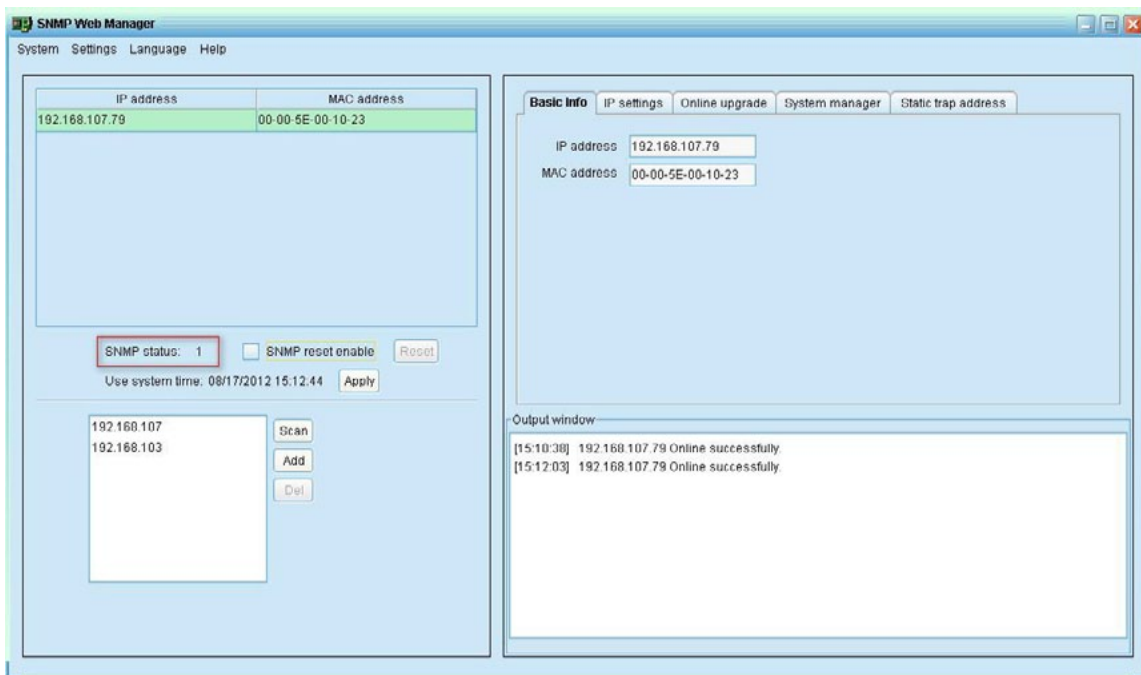


## Delete

You may select IP address from the list and remove it by clicking "Del" button.

## SNMP Status

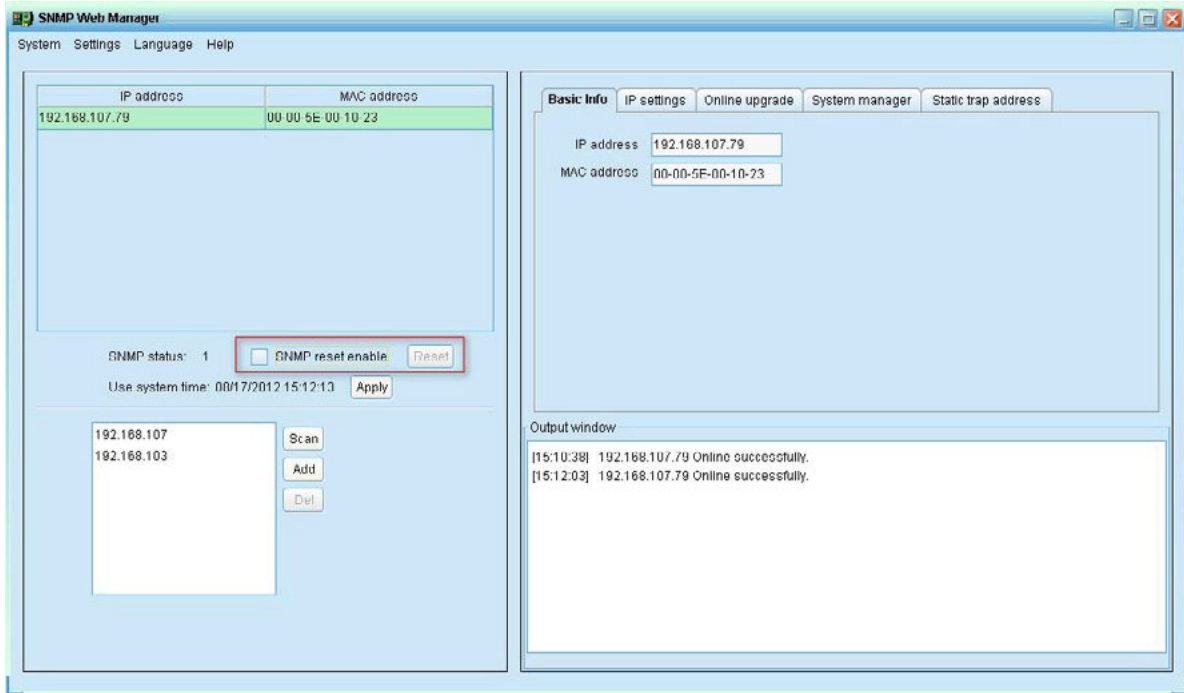
It will display SNMP status, 0 or 1, after selecting IP from the IP list. If there is program inside of selected SNMP card, the status becomes 1. If not, it will display 0. If no IP address is selected, it will display "---" as default.



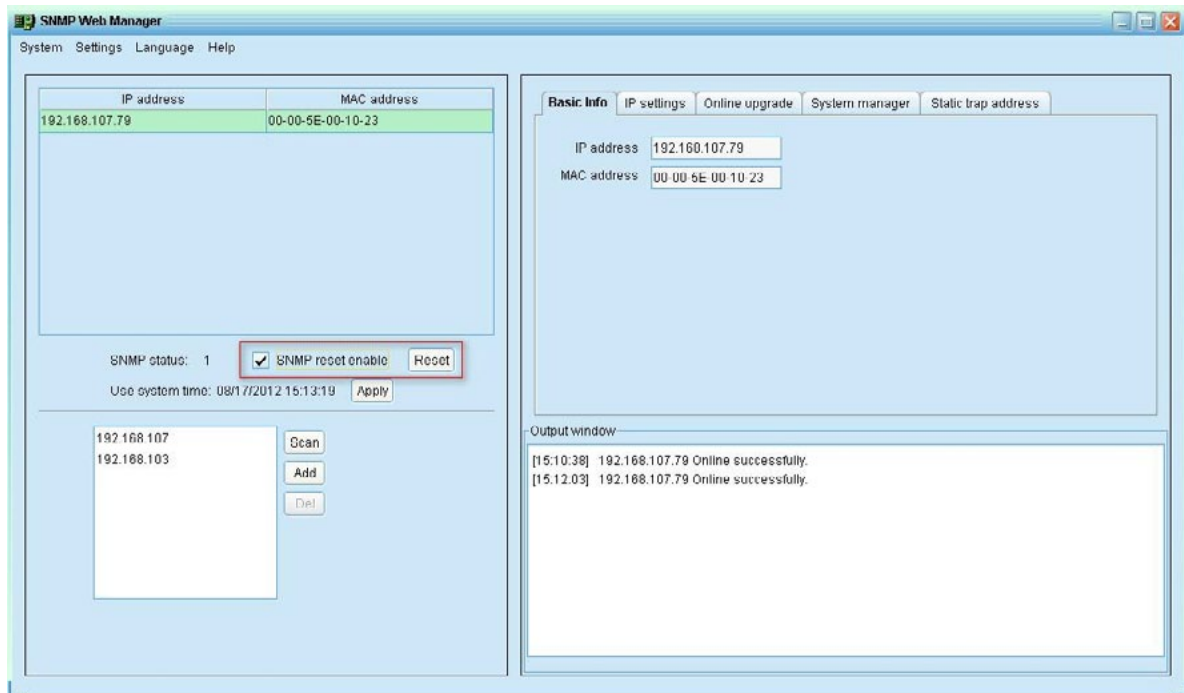
## Reset

If it is required to restart the IP addresses of devices, please select the checkbox of “SNMP reset enable” and click “Reset” button. Then, if login is confirmed, you can restart the device. Steps are as follows:

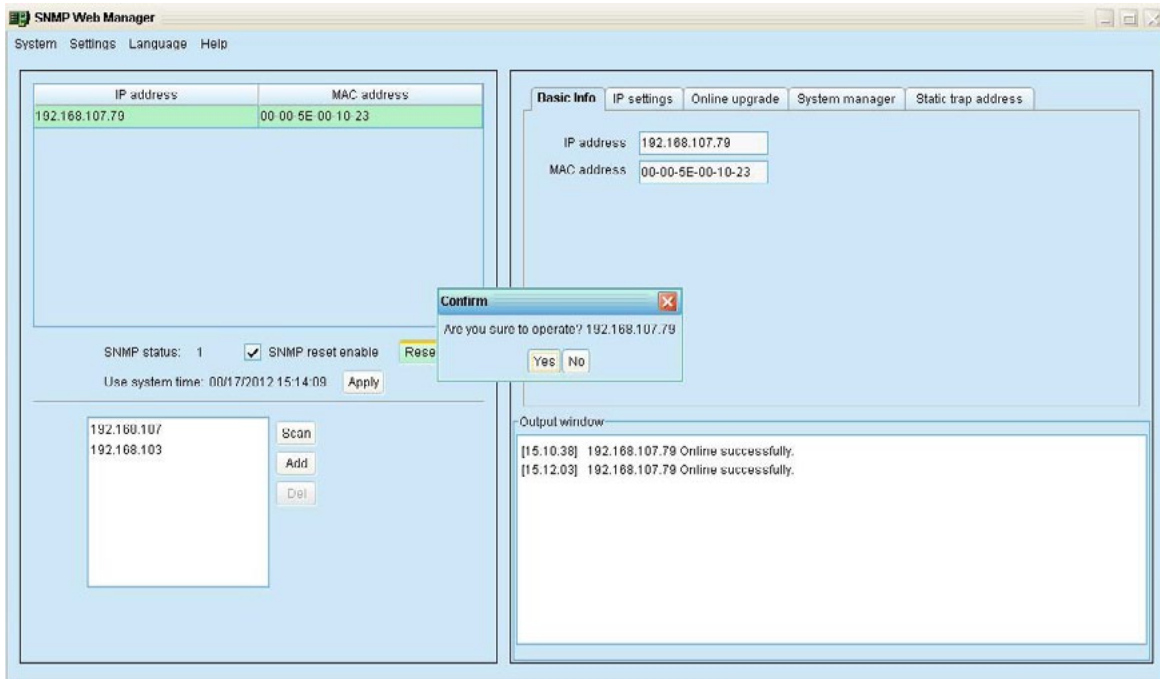
Step 1: Select IP address needed to restart IP from the list. Then, “SNMP reset enable” will become available to select.



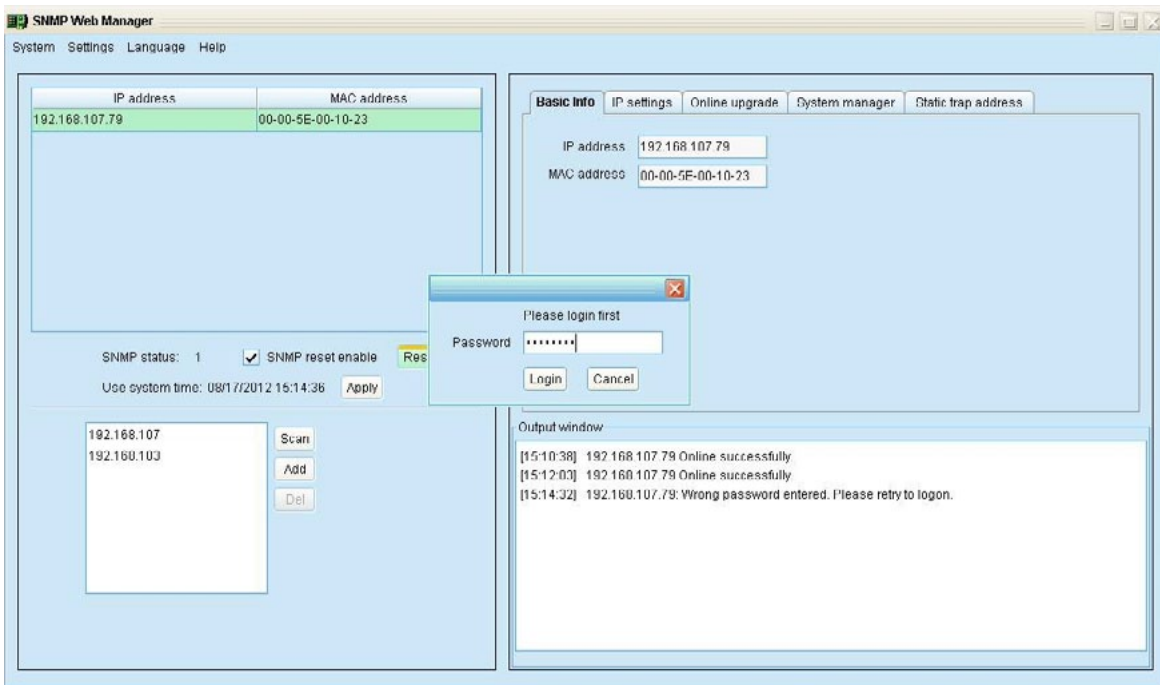
Step 2: Click checkbox of “SNMP reset enable”. Then, “Reset” button will become available to click.



Step 3: Click “Reset” button and it will pop up a message to confirm this operation.



Step 4: If “Yes” is selected, it’s requested to log in first. If “No” is selected, it will stop this operation.

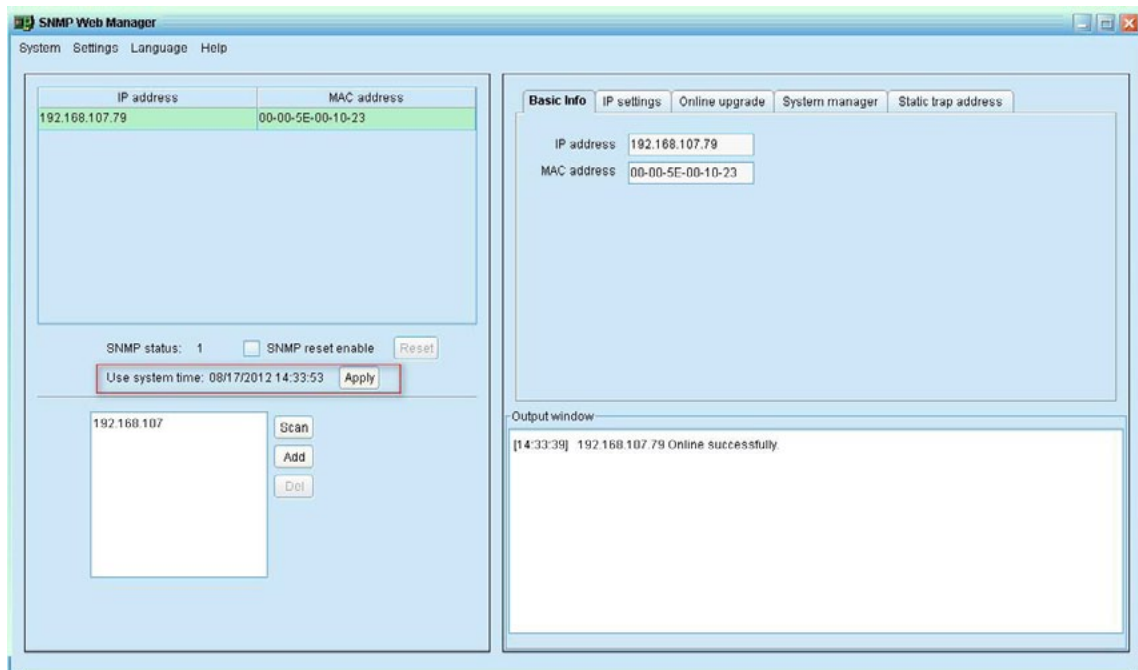


Step 5: Enter the correct password and click “Login” button. The target device will be restarted.

**Note:** If changing the MAC address of current device before reboot and the current device is applying DHCP (Automatically obtain IP address) method, you need to manually click “Scan” button to scan.

## Use system time

If “Use system time” is selected, the SNMP card will apply PC system time.



## Function Menu

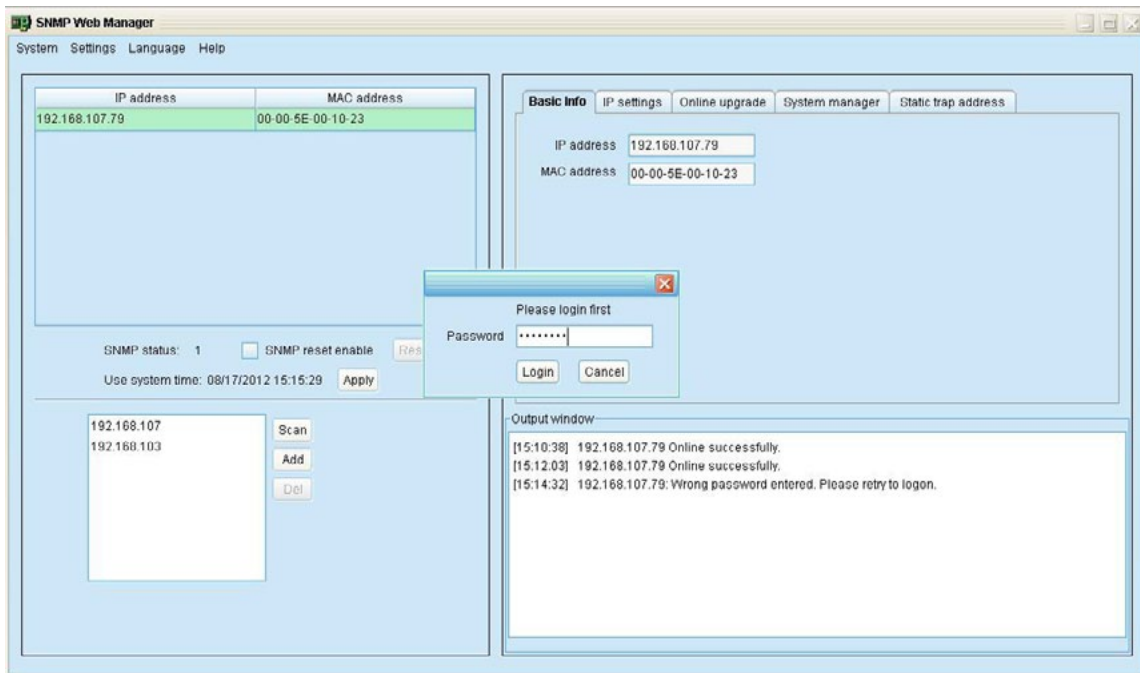
### System

#### Login

It's necessary to verify ID to remote access SNMP devices. The default password is “12345678”.

Step 1: Select System >> Login

Step 2: Enter default password and then click “Login” button. Or click “Cancel” to cancel login.



### Logout

Clear all currently saved passwords.

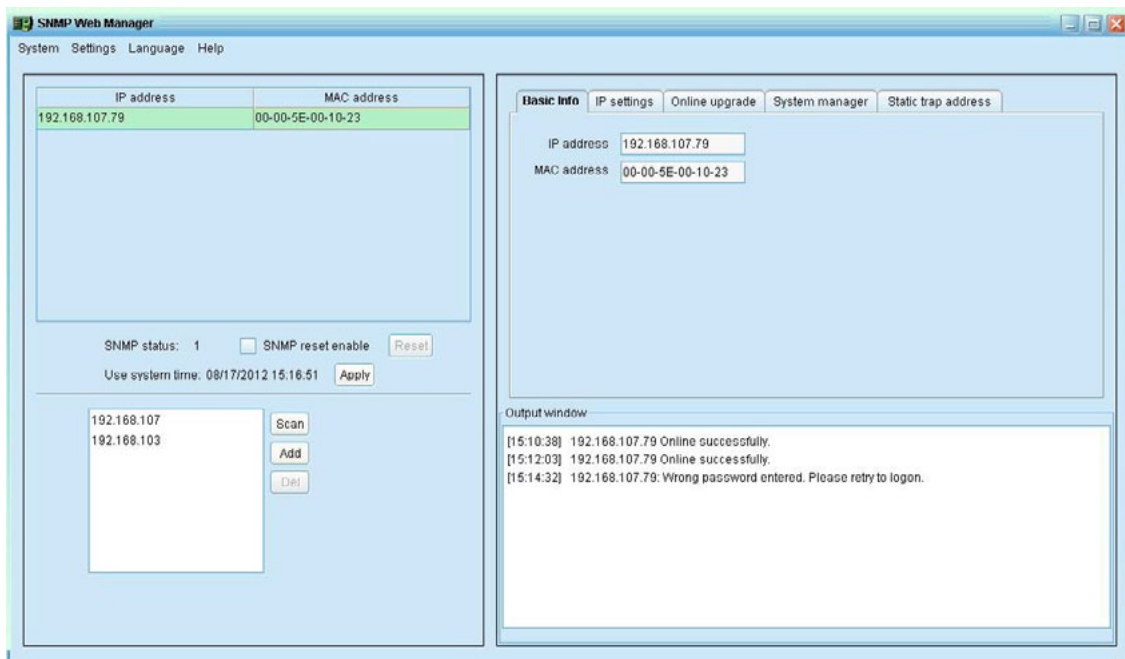
### Quit

Select "Quit" to exit SNMP Manager.

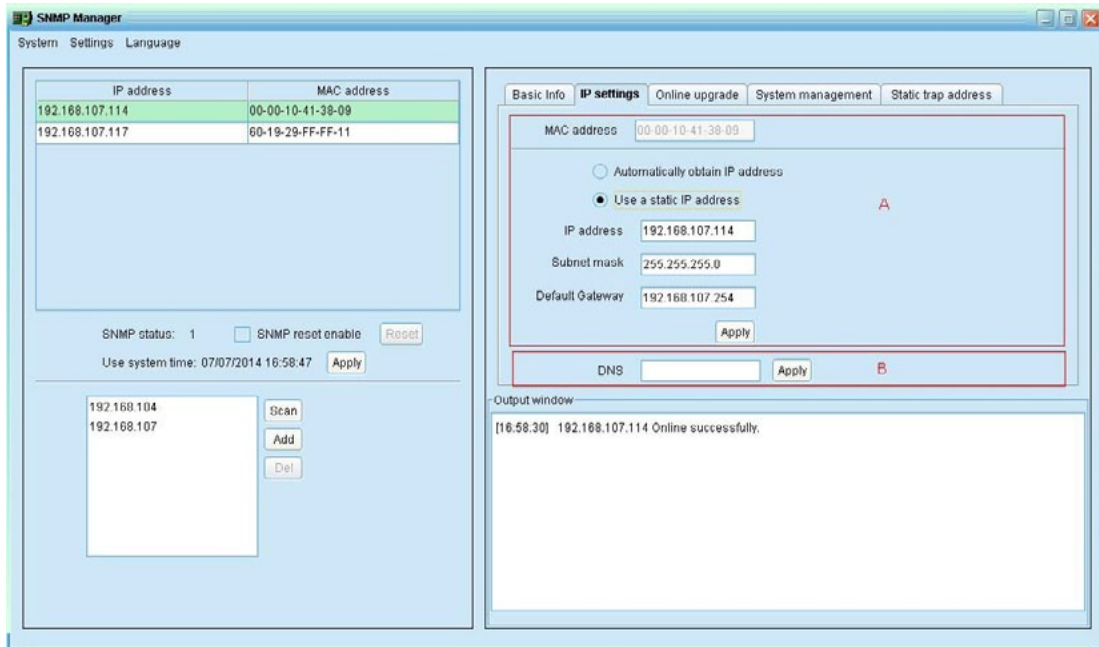
### Settings

### Basic Info

User can manually enter basic information of SNMP cards such as UPS name, Address, and Note for verification.



## IP Setting

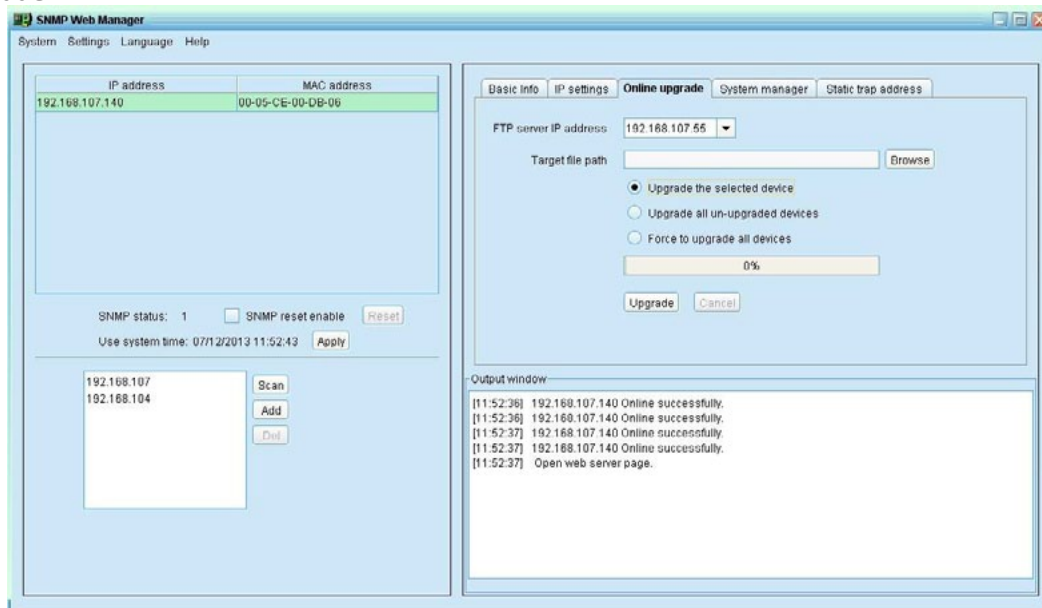


**Part A:** There are two methods to obtain IP address.

- Automatically obtain IP address (DHCP)  
It will allow system to automatically obtain IP addresses. If there is no this kind of service provided in LAN, the default IP will display as “192.168.102.230”, Subnet mask as “255.255.255.0” and default gateway as “0.0.0.0”. Simply click “Apply” button to apply this change.
- Use a static IP address  
It will allow users to enter static IP address for SNMP devices. When entering IP address, Subnet mask, and gateway address, simply click “Apply” button to apply this change.

**Part B:** Enter the DNS and click “Apply” button

## Online upgrade





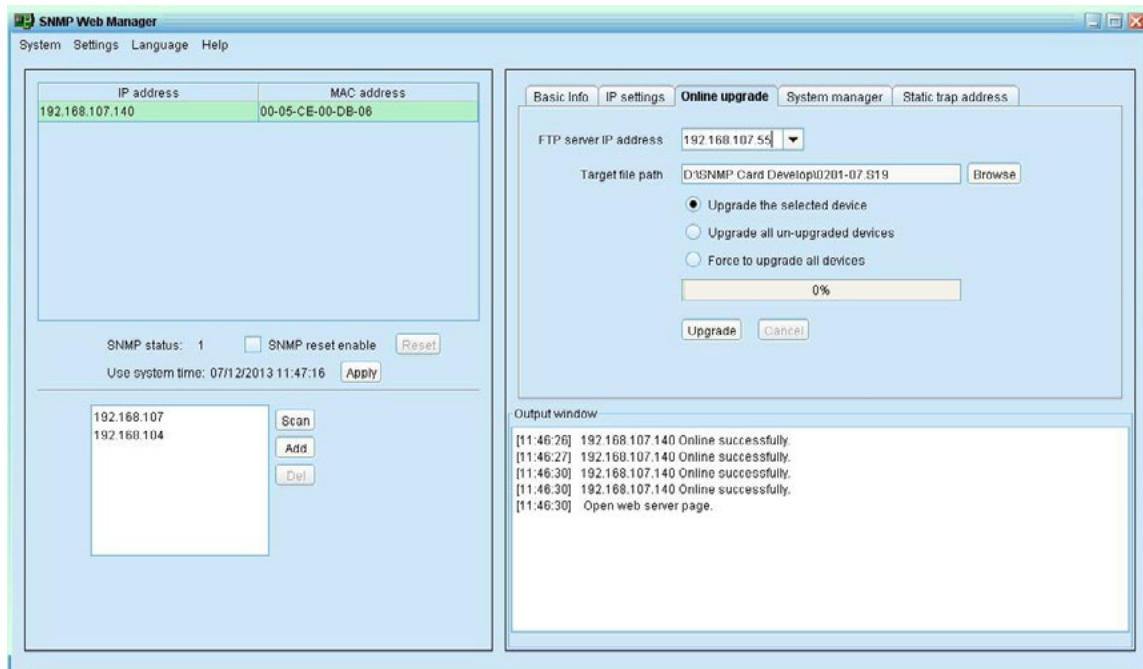
There are three methods for online upgrade:

- Upgrade the selected devices: It will upgrade all SNMP devices listed in the IP list.
- Upgrade all unupgraded devices: It will only upgrade SNMP devices which are not using the latest version.
- Force to upgrade all devices: No matter what kinds of version are used for SNMP devices listed in the IP list, it will upgrade to the latest version for all SNMP devices.

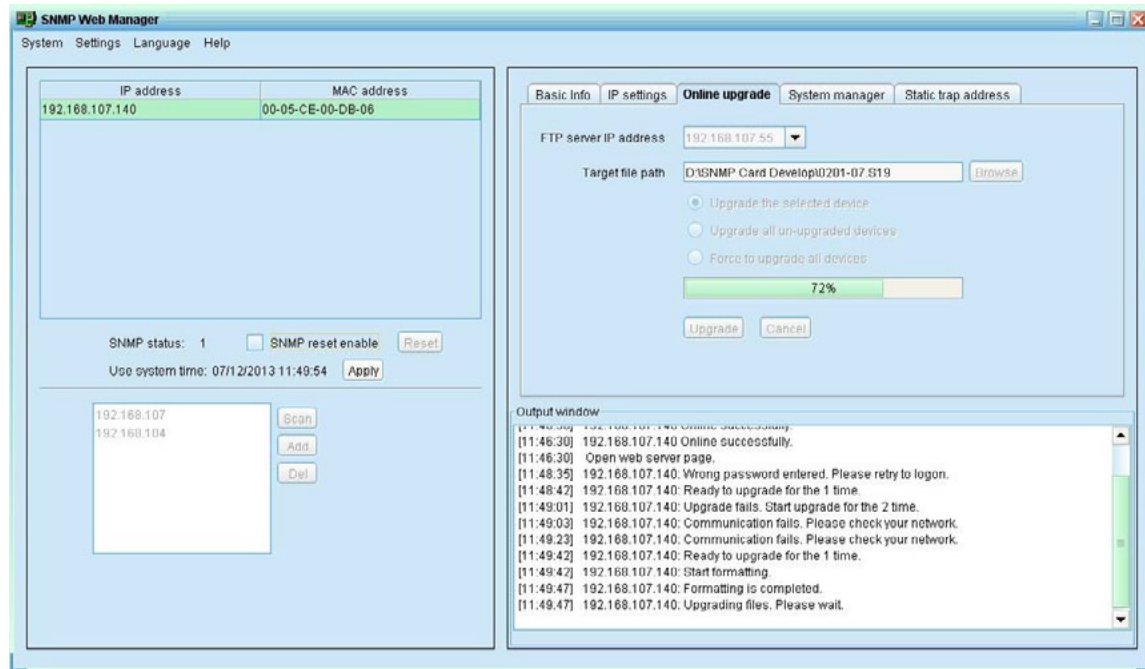
**Step 1:** select the FTP server IP address.

**NOTE:** If applying upgrade for SNMP Web Server in LAN, FTP server IP address will be IP address of current PC in LAN. If applying upgrade for SNMP Web Server in specific networking, FTP server IP address will be IP address of current PC in Internet.

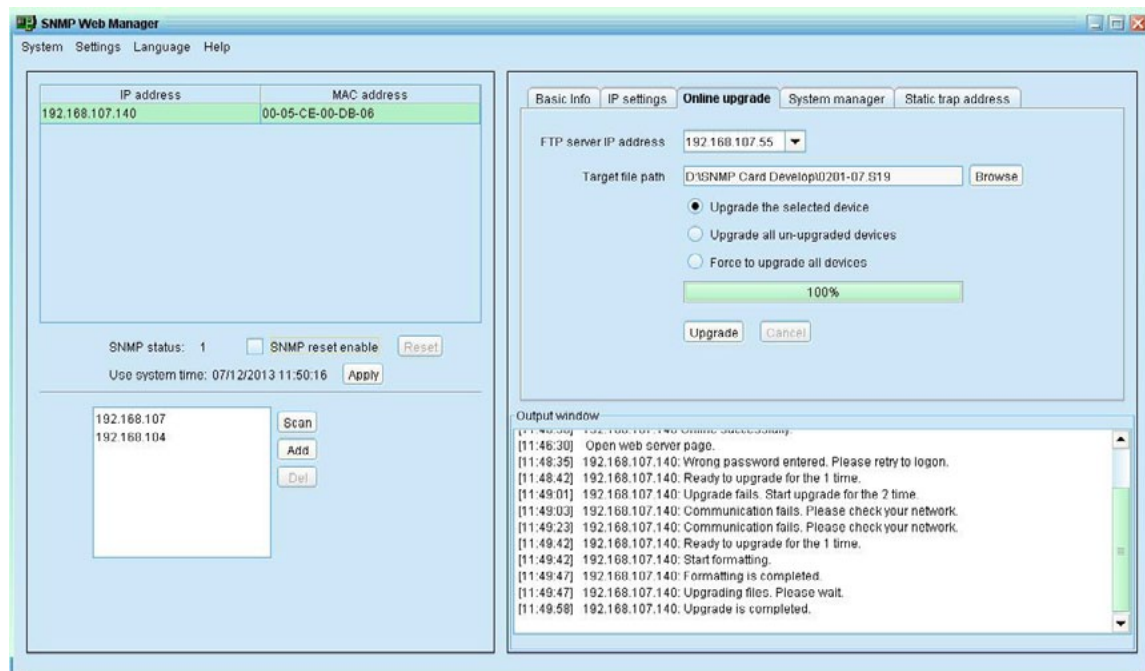
**Step 2:** Click “Browse” button to choose program file.



**Step 3:** Click “Upgrade” button to execute upgrade action.

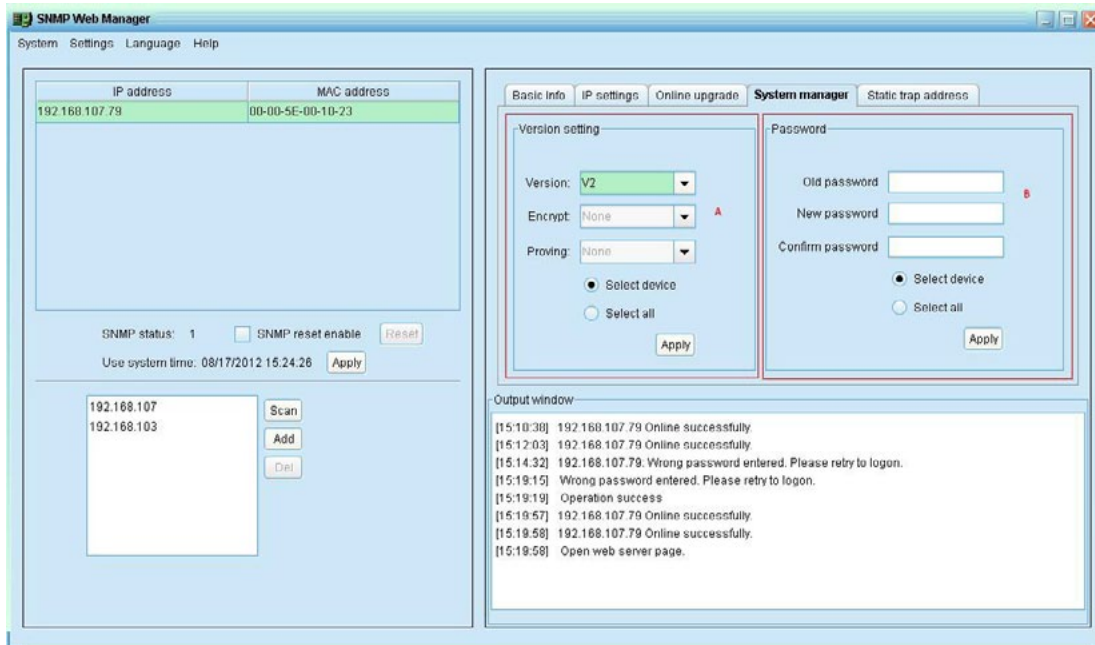


**Step 4:** When upgrade is complete, you may check the message in output window.



**Note:** If abnormal situation occurs during upgrade process, the system will automatically restart the upgrade operation. If this interruption occurs five times, then, system will automatically stop this operation. At this time, please check if LAN is working well.

## System management



**Part A:** You can set SNMP protocol version for selected or all devices. Simply choose SNMP protocol version first. The default setting is V2. If choosing V3, it's also necessary to set encrypt. Select devices to apply this setting.

- Select device: Set SNMP protocol version for selected SNMP devices from device list.
- Select all: Set SNMP protocol version for all SNMP devices from device list.

Then, click “Apply” button to complete version setting.

**Part B:** You may modify single password for one SNMP device or all passwords for all SNMP devices. Please enter original password, new password and reenter new password. Select devices to apply this setting.

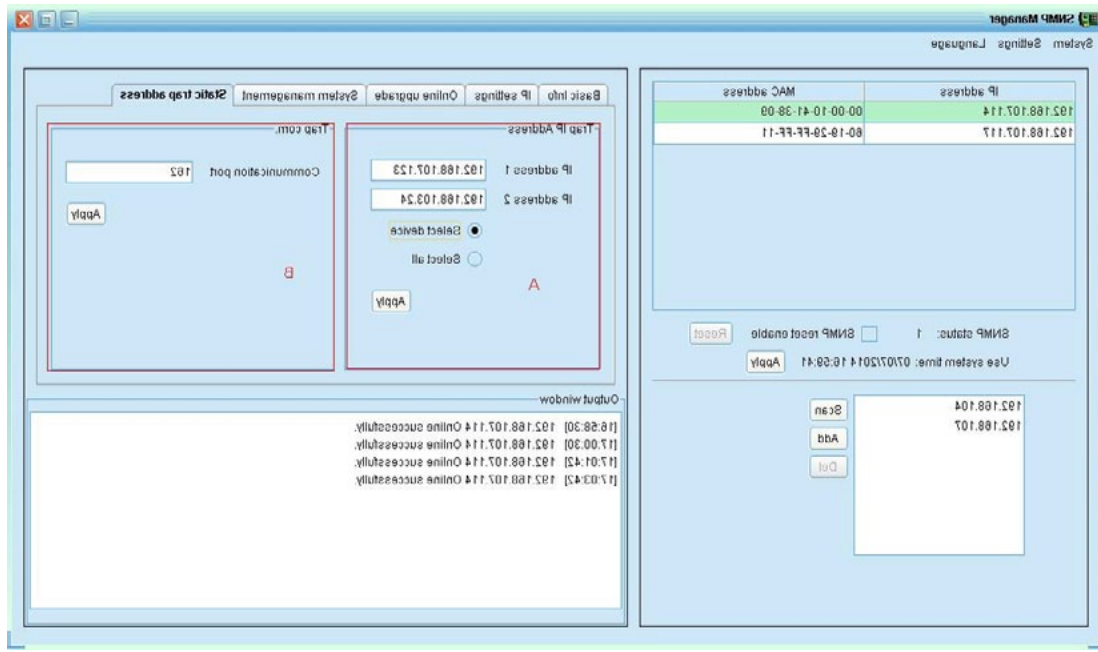
- Select device: Choose to change password for selected SNMP device from device list.
- Select all: Choose to change passwords for all SNMP devices on the window list

Then, click “Apply” button to change password.

**Note:** The length of password is 8~15 digits. If this change is applied for all SNMP devices, the password will be consistent for all SNMP devices.

### Static trap address

You may configure two static trap addresses and change trap port in SNMP Manager. The default trap port is 162.



**Note:** This software allows SNMP device to send trap messages to 2 static trap addresses and 8 dynamic trap addresses. It will default define host computer with software installed as a dynamic trap address. If communication failure occurs between SNMP card and host computer for over 10 minutes, it will stop sending trap message.

### Language

- SNMP Manager offers 12 languages:
- Chinese(Simplified)
- Chinese(Traditional)
- English
- German
- Italian
- Polish
- Portuguese
- Russian
- Spanish
- Turkish
- Ukrainian
- French

The default language setting is “English”.

## Configuration

### Https/Http

Communication protocol: If choosing Https, “Https” selection will be accessible from tray menu. If communication port of Https is fixed in “18443”, it’s not allowed to use “port modification”. At the same time, the URL of monitoring screen will become:

<https://xxx.xxx.xxx.xxx:18443/ViewPowerPro>

If choosing Http, “Https” selection will not be accessible and “port modification” function will become active status.

### Port Modification

If port conflict occurs, you may modify value of port. The default setting for port is listed as below:

- Web Service port: 15178
- Web service shutdown port: 8005
- AJP port: 8009

You may modify the value of port to any number between 0 and 65536. If value is applied already, the system will remind users to enter another number again.

**Note 1:** Please do not modify port value unless port conflict occurs. This modification will affect remote monitoring website. For example, if changing web service port to 15177, then the remote monitoring website will change to

<http://xxx.xxx.xxx.xxx:15177/ViewPowerPro>

**Note 2:** To avoid possible conflicts, please be sure to enter value at least 4 digits.

### ViewPower Pro Start and Exit Setting

- Server startup type: If "Auto" is selected, the software will automatically start up when PC is turned on. If "Manually" is selected, users have to manually start the ViewPower Pro software.
- Exit to stop monitoring: If selected, it will completely exit software without monitoring service. If unselected, it will continue monitoring service in the back end even though exit from software.

### Software Upgrades

- Specify the URL for update files: This is the directory to online update software. Please do not change it unless it's instructed by software vendor.
- Save files to: The directory to save files.
- Online autoupdate: If selected, it will automatically check if there is any new version launched online every 1 hour.
- If applying online upgrade, please follow below for configuration:
  1. Select "Apply the proxy configuration";
  2. Enter IP address and port of server;
  3. If ID identification is requested, select "Enable authentication" and enter User Name and Password.
- Connection test: Click this button to test if all configurations are set up well.

### Configuration Saved

Click "Apply" button to save all changes in Configuration page. Click "Cancel" to stop the change.

### Https

Https section includes "Certificate Generation" and "Import Certificate".

- Certificate Generation: it will automatically generate a numeral certificate according to the information users enter.



**Generate certificate**

First and last name

Organizational unit

Organization

City or Locality

State or Province

Two-letter country code for this unit

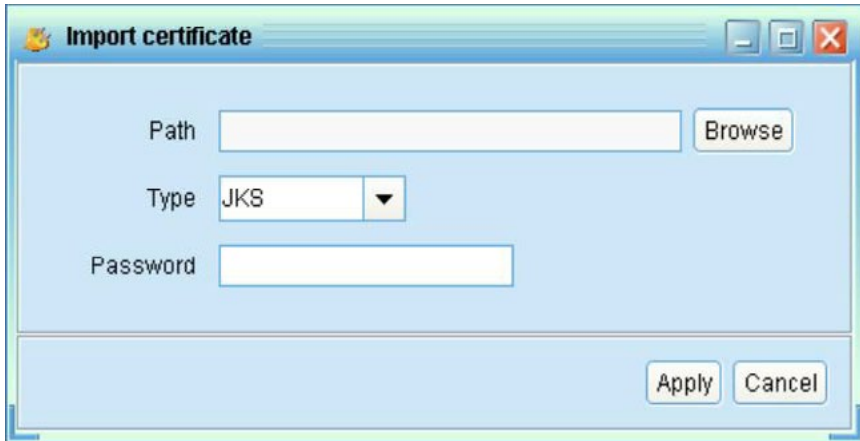
Password

Apply Cancel

**Note 1:** Please enter internet domain name and IP address in “First and last name” column.

**Note 2:** Password should be at least 6 characters in length.

- Import Certificate: It will import a https certificate from a third party. It supports JKS and PCKS12 types of certificate.



**Import certificate**

Path  Browse

Type JKS ▼

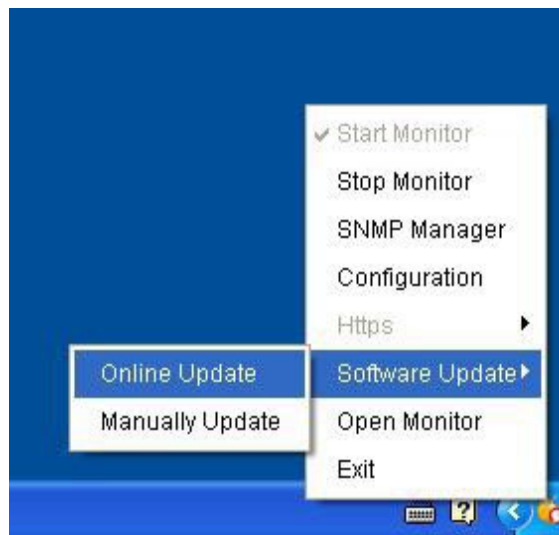
Password

Apply Cancel

## Software Update

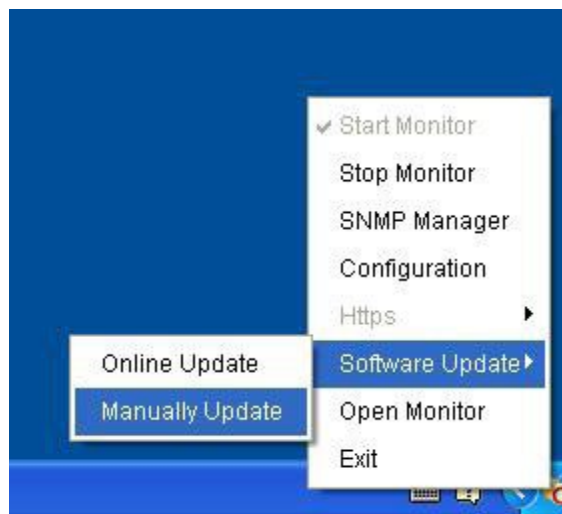
Software update includes Online Update and Manually Update:

- Online Update: Click “Online Update” to search the latest software version. If there is new version detected, it will automatically download and update.

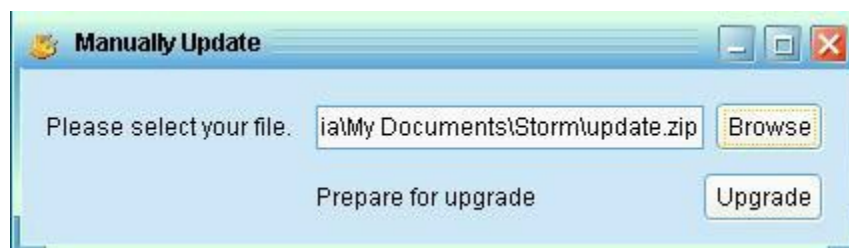


- Manually Update: Users can manually update the software. Follow below steps

1: Click “Manually Update” from function menu.



2: Click “Browse” to choose file directory. And then click “Upgrade” to upgrade software.



### ***Open Monitor***

Click “Open Monitor” to open monitoring webpage.

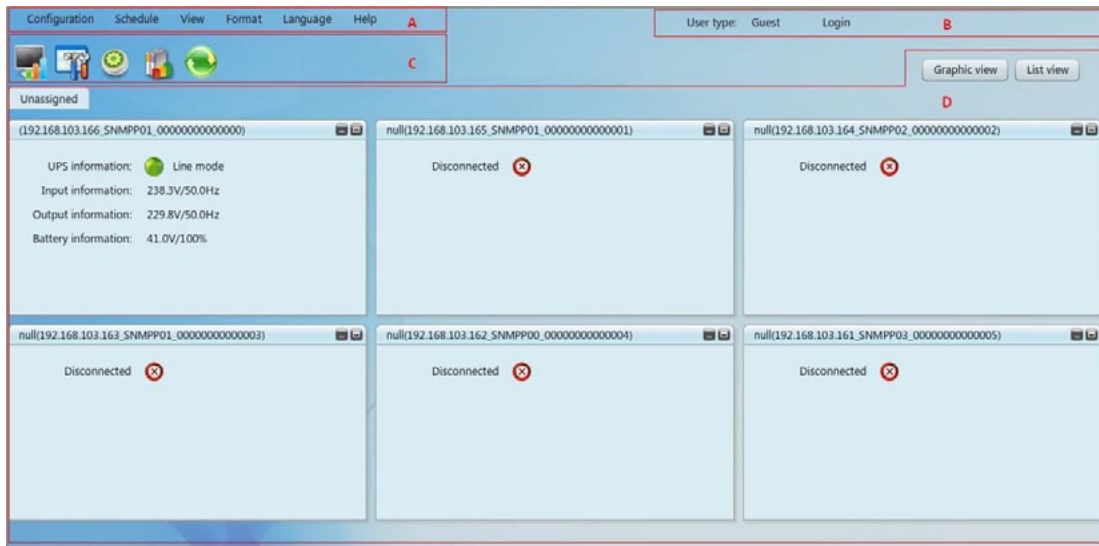


## Exit

Click “Exit” to exit service application.

## ViewPower Pro GUI






ViewPower Pro GUI includes function menu, shortcut button, login section and main screen.



A. Function Menu: It offers complete toolset for navigation and setting the GUI.

B. Login section: It shows user type for current login user.

C. Shortcut button

-  Centralized monitoring.
-  Password, group area, UPS setting, SMS, Email, load configuration, event action, log setting, EMD manager, modbus communication setting.
-  Scheduled on/off, scheduled battery selftest, and scheduled wakeonLAN setting.
-  Event log, event statistics, data, diagram, and EMD log.
-  Refresh.

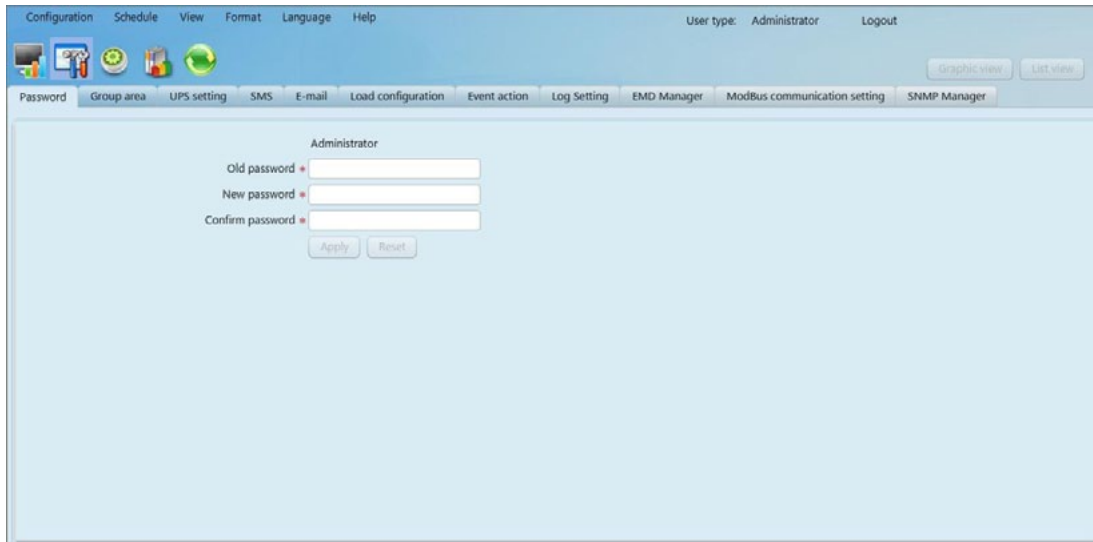
D. Main Screen: It will display information and/or control alternatives according to function menu or shortcut menu selected.

## ViewPower Pro Menu

### Configuration

#### Password Setting

It's password configuration for administrator only. The default user name and password is “administrator”. Before operating and configuring the software, please login and modify the default password first for security concern. Users can only browse UPS status and information as Guest status without login as an Administrator. Guest can NOT control or execute any setting.

**Step 1** Select Configuration>>Password.

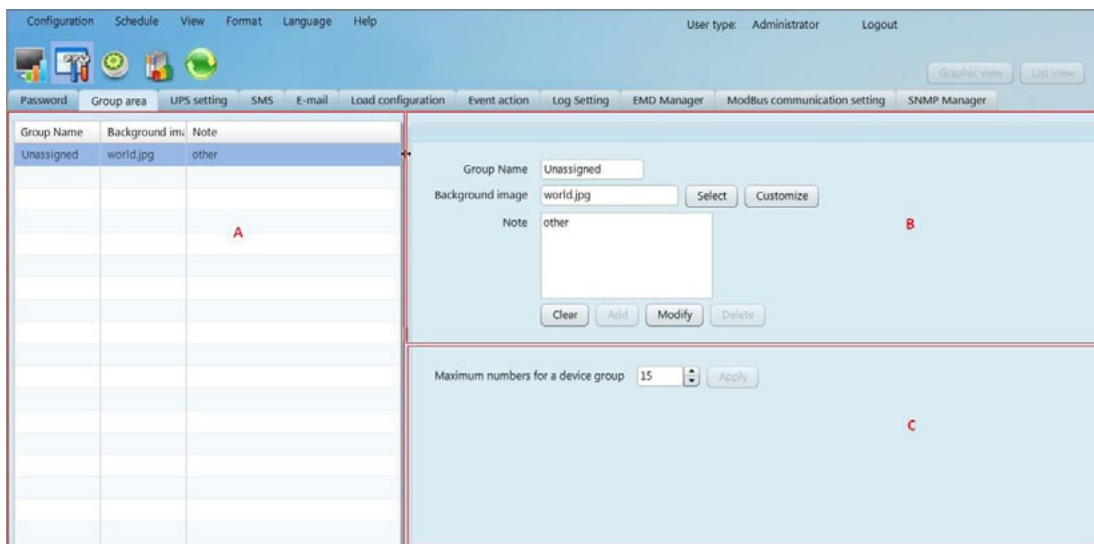
**Step 2** Enter old password and type twice new password to modify password for administrator. (The password should be at least 6 digits) Then click “Apply” button to successfully modify password for administrator.

**Note 1:** Simply click “Login” button on the top right corner to log in the software.

**Note 2:** If password is forgotten, it's necessary to reinstall the software.

**Group area**

Select Configuration>>group area, user can assign monitored UPSs into different groups for best management. ViewPower Pro has a default group called “Unassigned”. When a UPS is detected, it will automatically put in the “Unassigned” group. Users are able to not only create and customize groups here, but also assign groups in “UPS setting”.



**Section A** Group list: Shows group information;

**Section B** Group editor: add/delete, set up and modify group;

- Background image: Click “Customize” button to import preferred image into software as background for graphic view. Or users can simply select preferred photos from default image database by clicking “Select”

button.

- Add group: Add group into group list in section B. Then click “Add” button to add.
- Modify group: Select a group from the list in section A to modify the current setting and it will show the current setting in section B directly. After entering new data, simply click “Modify” button to update setting.
- Delete group: Select the group which needs to delete from the list on section A. Then click “delete” button to delete.

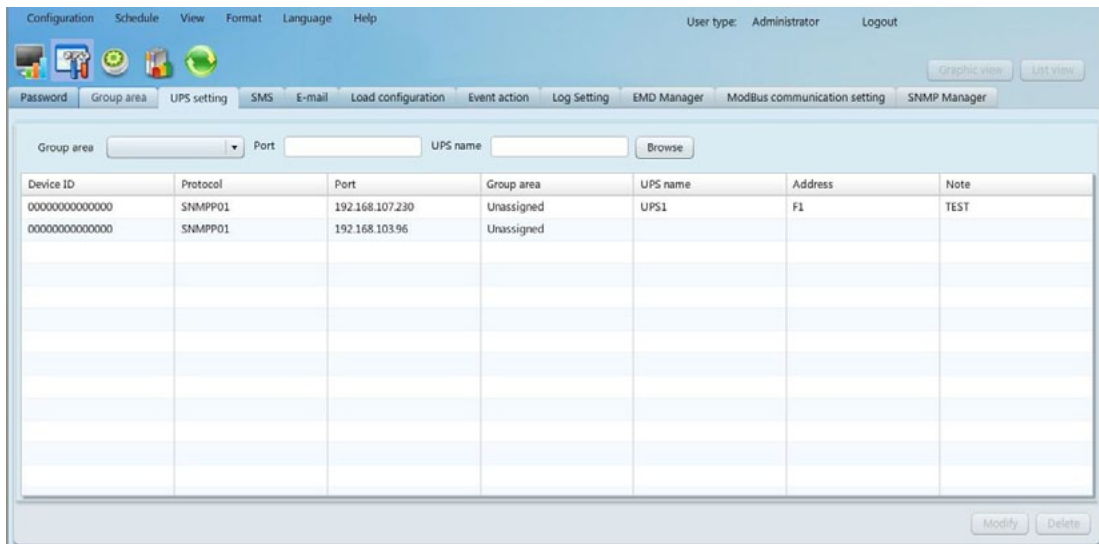
**Note 1:** Default group can only be modified, NOT allow to delete.

**Note 2:** When “Add” button is disabled, first execute “Clear” operation.

**Section C** Maximum numbers for a device group: It means maximum numbers will be shown in each group.

### UPS setting

Select Configuration >> UPS setting. It helps users to assign or reassign groups for monitored UPSs. When a new UPS is detected, it will automatically put in default group “Unassigned”.

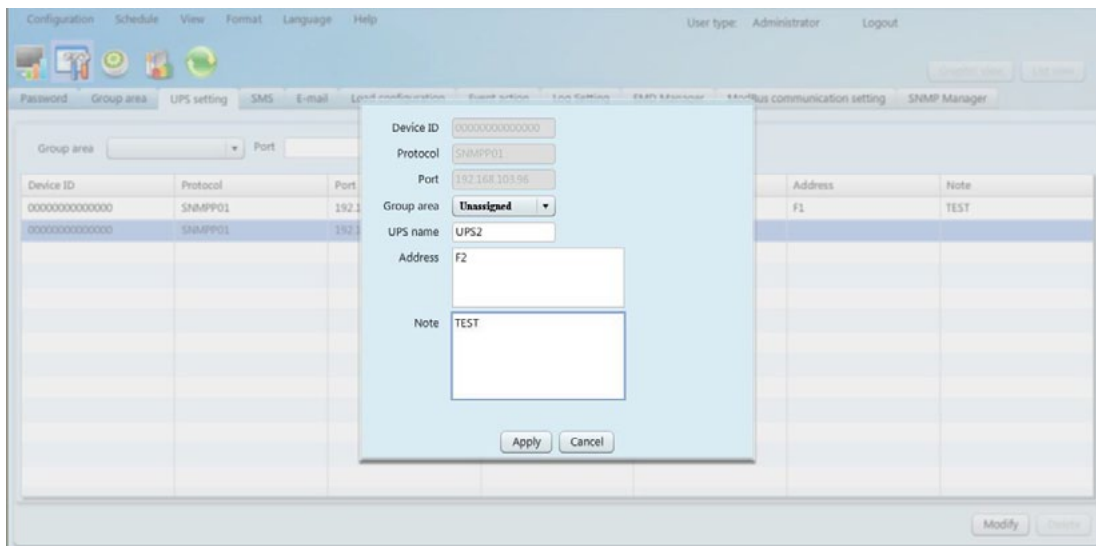


### Query

User can query information according to the Group area, Port, UPS name by clicking each column tab.

### Modify

Select UPS that need to modify from the list and click “Modify” button for modification. It will pop up information board of each monitored UPS and users can assign or reassign UPSs to group area. It also can enter the UPS location and name here for internal reference. Click “Apply” button to save all changes.



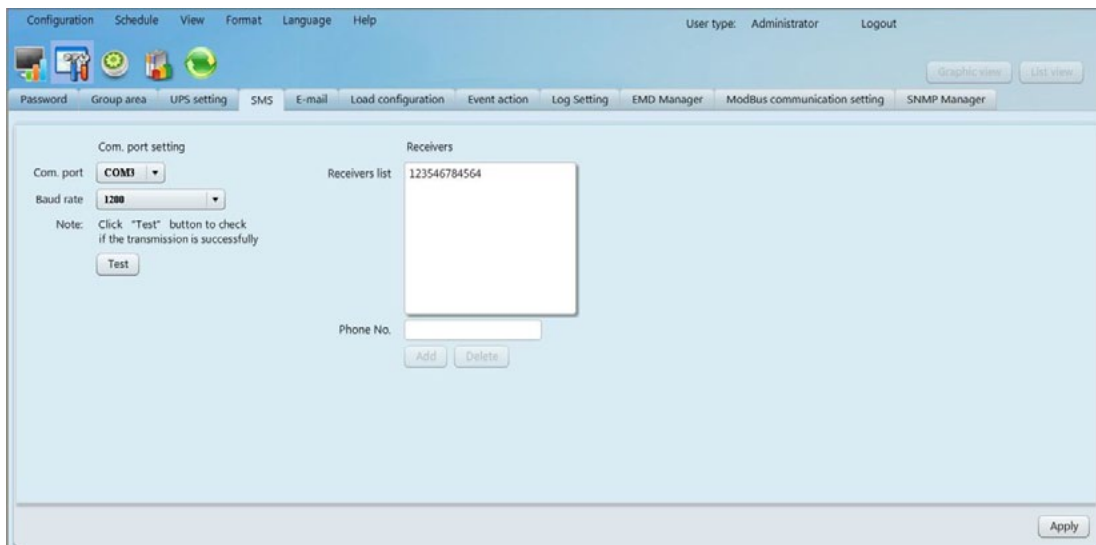
### Delete

Select UPS and click “Delete” button to remove it from the list.

### SMS

It's for entering SMS receiver list. In the event of an alarm condition occurring, a message about UPS status will be sent to the specified users via mobile phone. For the event receiving list, please configure in “Event Action” page.

1. Choose Configuration >> SMS.



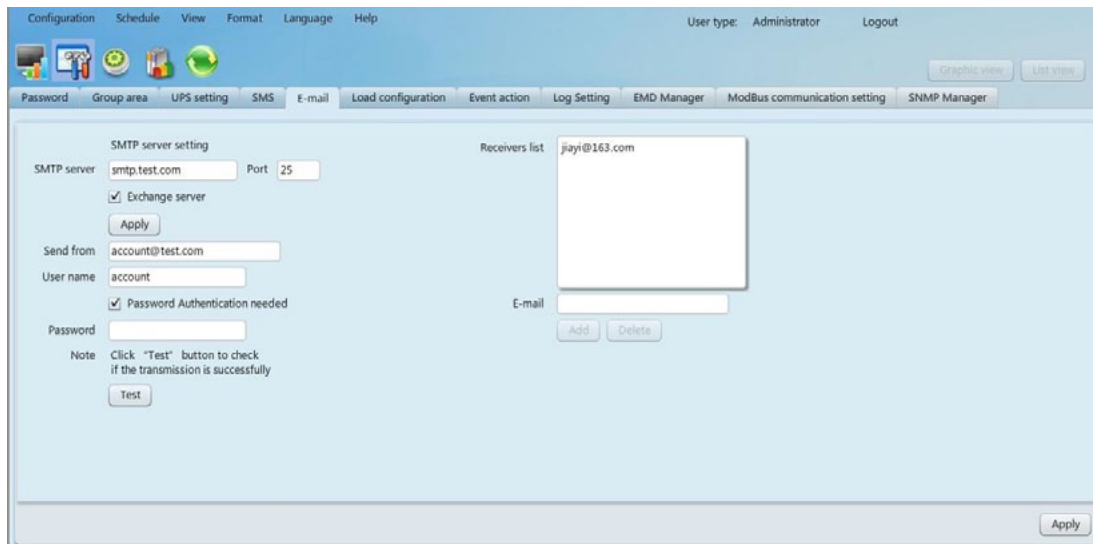
2. Select communication port and baud rate.
3. Enter mobile phone numbers in “Phone no.” column and click “Add” button to add phone no. in Receivers List. To delete numbers, simply select phone no. from “Receivers list” and click “Delete”.
4. Click “Apply” button to save all changes. The “Test” button can be used to send tests SMS to confirm the correct operation. If all parameters are set up correctly, system will send a test message to all receivers and pop up a successful message. Otherwise, it will pop up a failure dialog to indicate there is an error for parameter setting.

**Note:** It's required to plugin GSM Modem if sending SMS to mobile phones.

## Email

This feature enables the configuration to send alarm mail by SMTP server. For the event receiving list, please configure in “Event Action” page. To use this function, the email service must be correctly configured in the computer. All values in this function page are default empty. This action can't be executed without the SMTP information, email account and password. Besides, the sender account should be allowed for SMTP/POP3 forwarding.

Select Configuration >> Email.

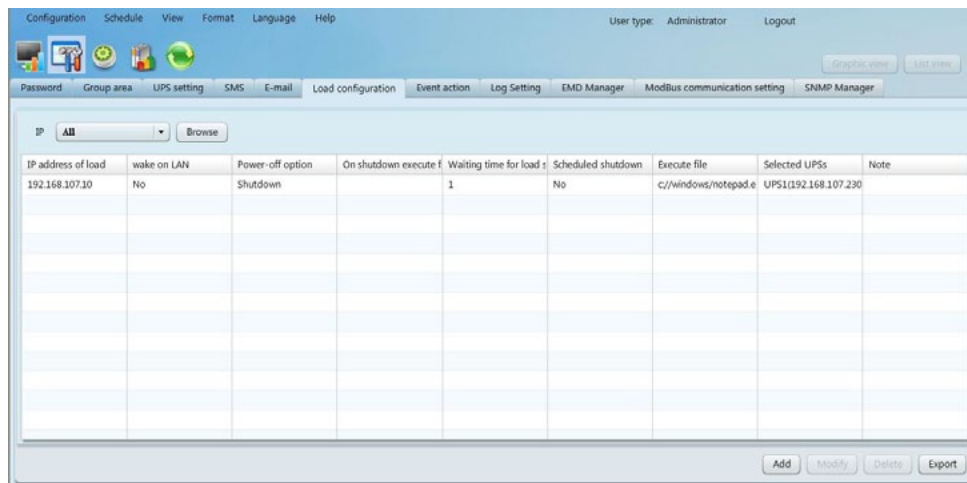


1. Enter SMTP server, SMTP port, Send from Email address, User name and password. Click checkbox of password authentication needed for password verify. If using Exchange Server for mailbox system, it's required to configure Exchange server domain name in SMTP sever and select “Exchange server”. Then, click “Apply” button.
2. Enter correct email accounts in Email column. Then click “Add” to add into receivers list. To delete email account, simply select accounts from Receivers list and click “Delete” button.
3. Click “Apply” to save all changes. The “Test” button can be used to send a test email to all receivers to confirm correct operation. When the test emails are successfully sent to specific recipients, it will pop up a successful message on operated PC. Otherwise, it will pop up a failure dialog to indicate there is an error for parameter setting.

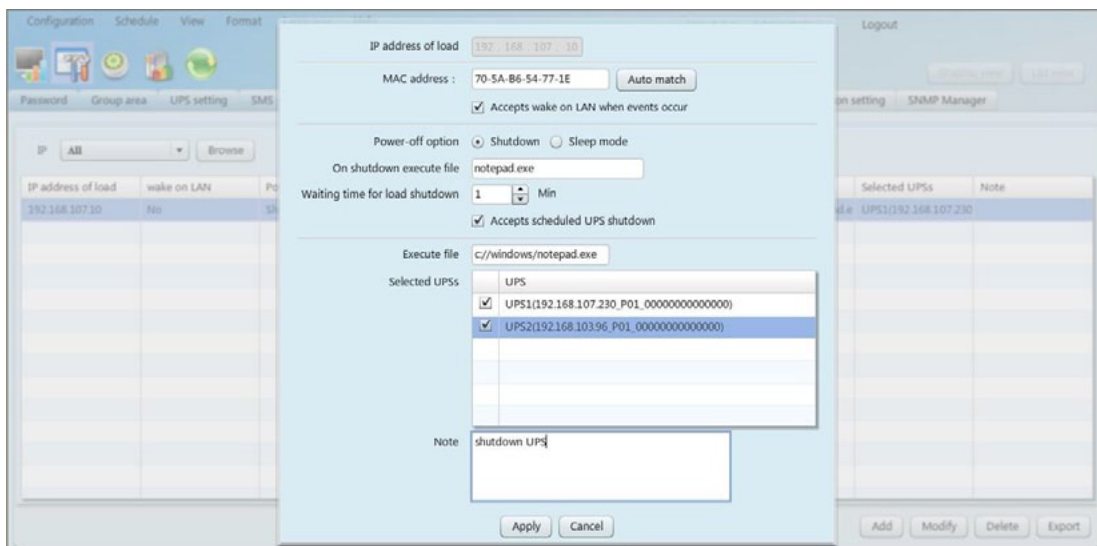
## Load configuration

Load configuration can remotely manage other computers via intranet or internet. It can set up remote computers in poweroff options, MAC address, execute file action, whether accept scheduled UPS shutdown or not, waiting time for load shutdown and so on. In addition, it also allows one computer to communicate with multiple UPSs. When any event occurs on UPS, the software can configure reactions of the monitored UPS via communicated computer.

1. Select Configuration>>load configuration.



2. Add: Add load information (one computer) by clicking “Add” button.



- Enter the IP address of this computer. Then, enter MAC address of this computer. Users also can get MAC address by clicking “Auto match” button when the connection is well.
- Poweroff option: Selecting poweroff method for above shutdown system.
  - » Shutdown: When clicking the checkbox, the selected system will shut down. The default setting is clicked.
  - » Sleep mode: When clicking the checkbox, selected system will suspend the system instead of a normal shutdown. But this function is only supported by Windows 2000 or higher on supported hardware.
- On shutdown execute file: Enter the path of execute file.
- Waiting time for load shutdown: If selecting “Accepts scheduled UPS shutdown”, enter to waiting time for load shutdown before shutting down UPS.
- Selected UPS: Select UPSs to execute shutdown action when entered PC is shut down.

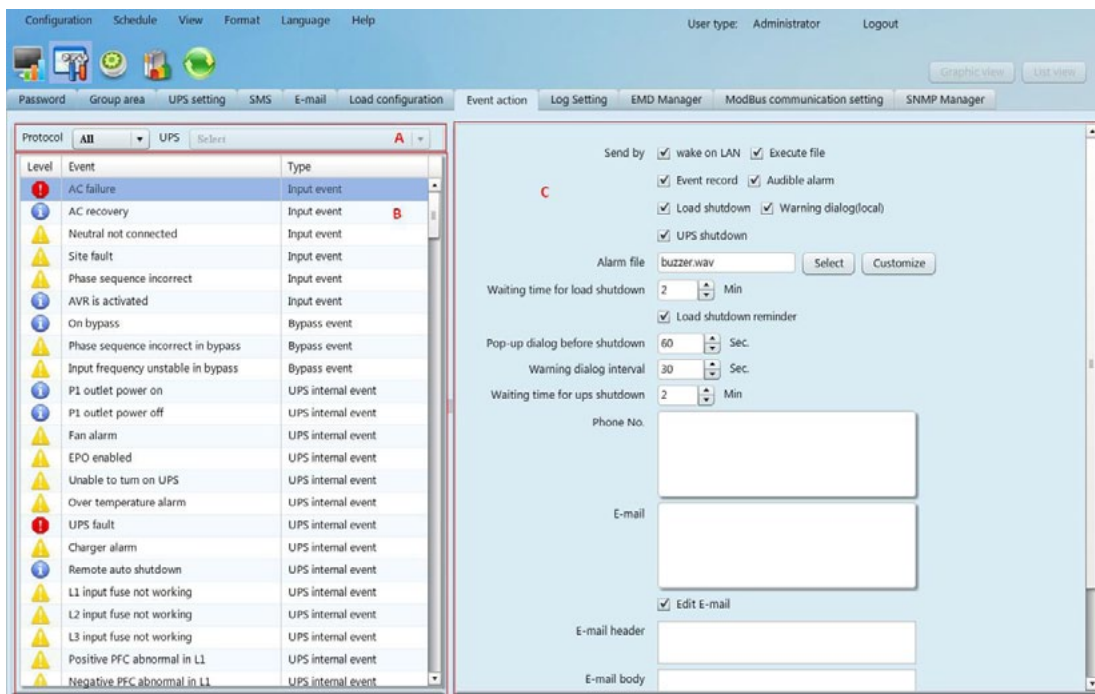
Click “Apply” button to save all changes.

3. Modify: Select one from list to modify configuration by clicking “Modify” button. User can also click “Delete” button to delete this information.
4. Export: Users can export load setting table in PDF format by clicking “Export” button.

**Note:** User need to install the "Shutdown Wizard", then load can be shutdown.

## Event action

It is to set up reactions after events occur. Select Configuration>>Event action.



**Section A:** List all detected UPSs. The system default is all UPSs.

**Section B:** UPS event list.

**Section C:** Event action editor

Select UPS from section A and then select event from section B. When selecting event, it's necessary to set up at least one reaction from section C. Click "Apply" button to save setting. This software provides seven reactions for UPS events.

- **Wake on LAN:** It is a technology to remotely wake up one computer by a network message. It is also required to have ATX power and hardware support for remote PCs to implement this function. When event occurs, this software will wake up PC by clicking this checkbox.
- **Execute file:** When event occurs, it will request connected computer to execute file.
- **Event record:** When event occurs, it will save the event records to the database.
- **Audible alarm:** When event occurs, it will play selected media file. If user wants to use customized sound, it's necessary to import media file into software by clicking "Customize" button. And then, select this imported media file by clicking "Select" button.
- **Load shutdown:** When event occurs, it will notify Shutdown wizard on remote PCs to shut down computer.
- **Warning dialog (local):** When event occurs, it will pop up message box to notify users.
- **SMS:** When event occurs, it will send event message to receivers via mobile phone.
- **Email:** When event occurs, it will send mail to receivers via email. And you can edit Email.
- **UPS shutdown:** When event occurs, it will shut down the UPS.

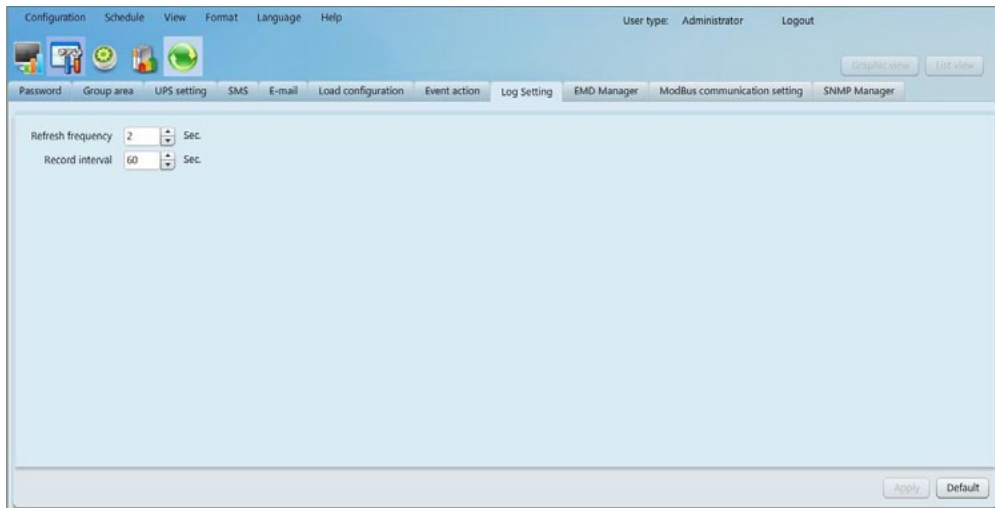
**Note 1:** When editing receiver list in SMS or email columns, it's necessary to refresh the event action page to update receiver list.

**Note 2:** Event list will be different according to different types of UPS.

## Log setting

- Refresh frequency: The setting range for “Refresh frequency” is 2~600 seconds. It will affect the displayed data refreshed in software screen.
- Record interval: Users can set up “Record Interval”, “The max. Numbers of logs for historical data” and “The max. Numbers of logs for historical events” according to real situation.
- The setting range for “Record interval” is 30~600 seconds. It will effect history data displayed under View >> History >>Data.

1. Select configuration>>Log setting.

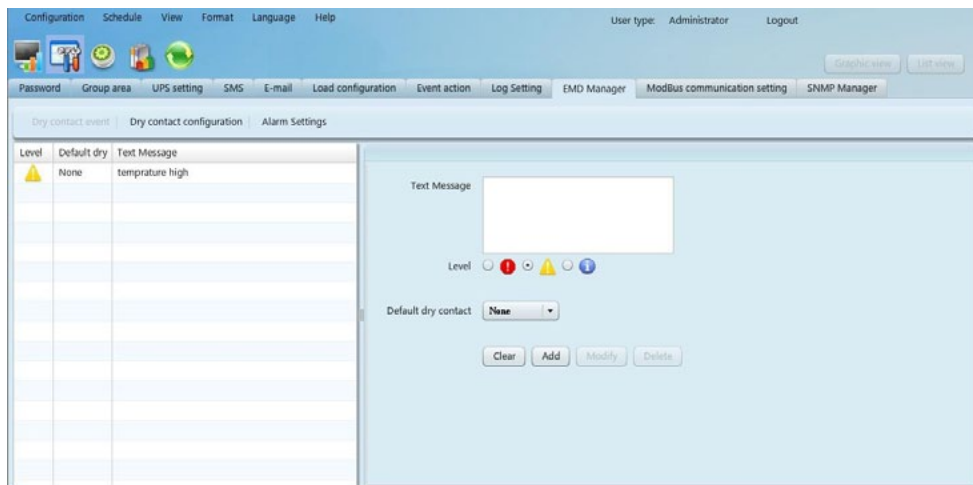


2. Enter time interval and click “Apply” button to save all settings.
3. Click “Default” button to recover the default setting.

## EMD Manager

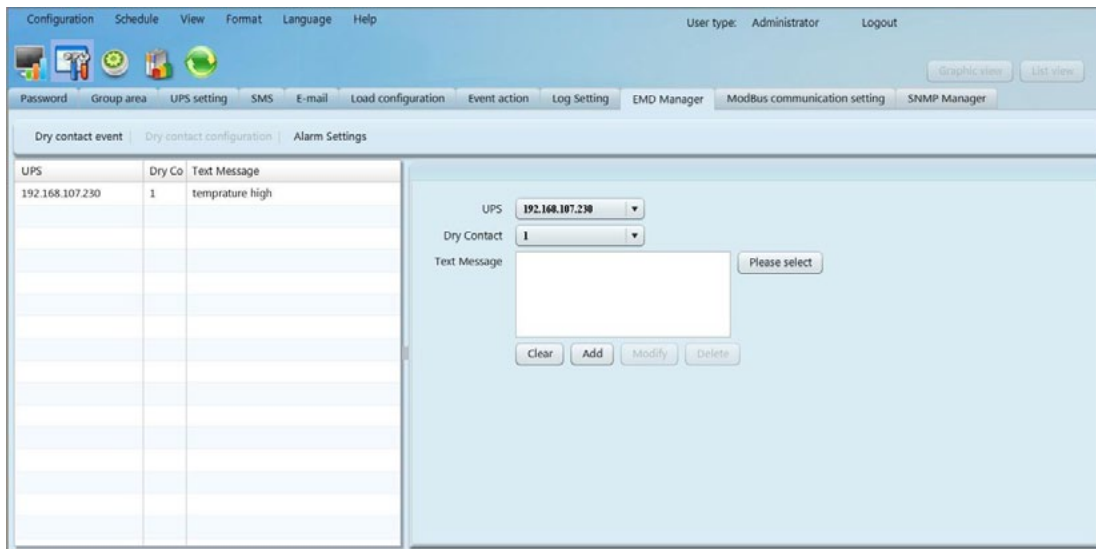
EMD Manager is used to manage Environmental Monitoring Devices. Users can define events and set message texts for each event. It also can set up warning points for temperature, humidity and smoke of devices.

- Dry contact event: Users can define events and set event level. After event is successfully added, users can configure and set alarm.

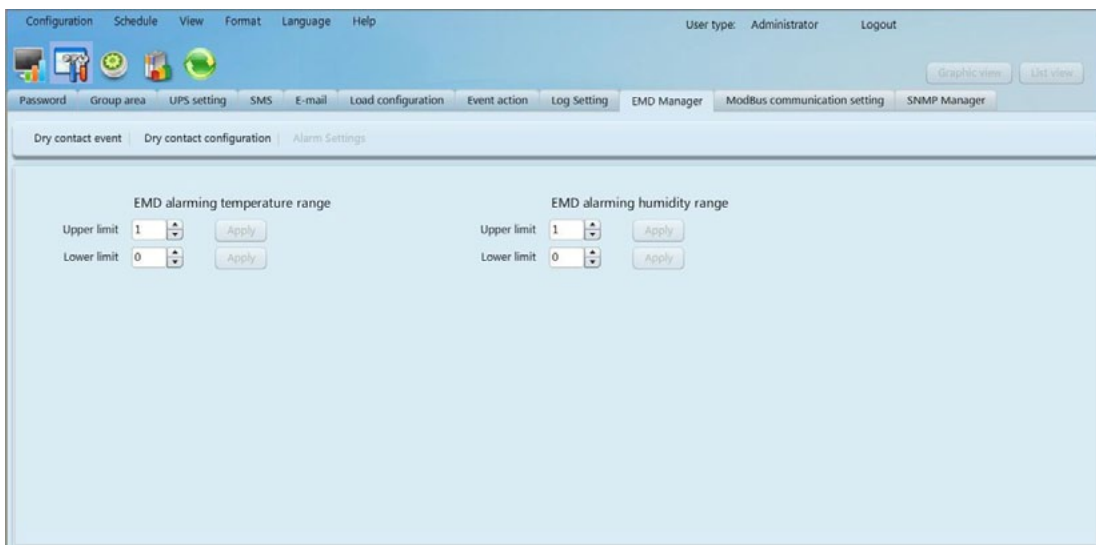




- » Text Message: The description of the dry contact event.
- » Default dry Contact: Define dry contact no. to send event message. There are five selections: none, 1, 2, 3 and 4. If selecting any value from 1 to 4, any environmental monitoring device (EMD) which is detected defined event will send event message. If selecting none, it means this event is defined as special event. Then, users can assign specific environmental monitoring device (EMD) to receive this event message. Please refer this special event setting in “Dry contact configuration” section.
- Dry contact configuration: Users can define special events with assigned dry contact no. for specific environmental monitoring device (EMD). If any defined event is detected by assigned device via assigned dry contact no., it will send alarm message via software.



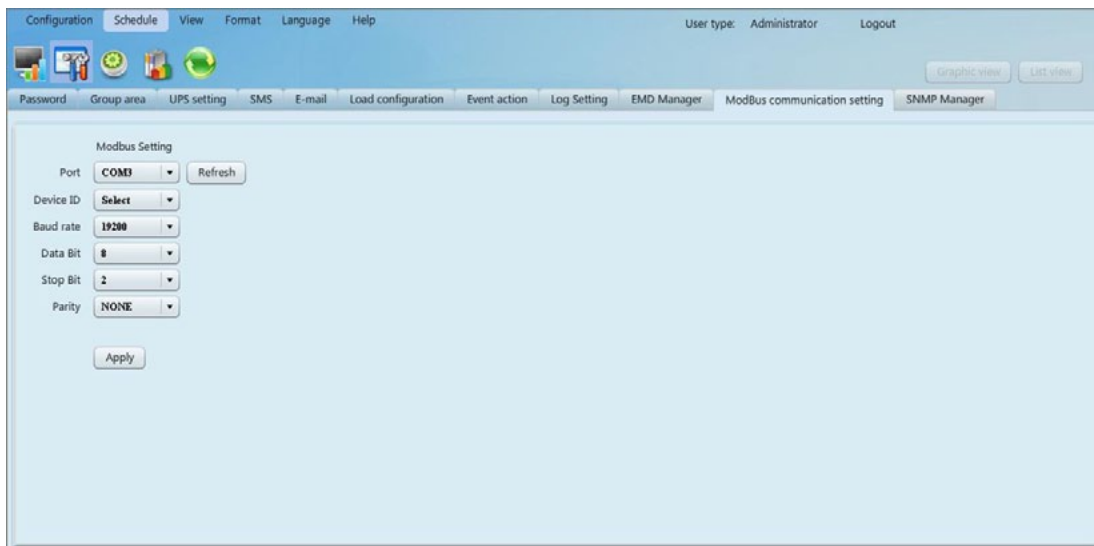
- Alarm Settings: Set up alarm range for temperature and humidity. If detected figures are out of setting range, it will send alarm message.



### Modbus communication setting

It will display all connected PCs through ModBus.

**Step 1** Select configuration>> ModBus Communication Setting.



### Step 2 Com. port setting:

- The default ID for nominated com. port is 0;
- Selectable baud rates are 1200, 2400, 4800, 9600, and 19200. The default setting is 19200;
- Selectable data bit is 7 and 8. The default setting is 8;
- Selectable stop bit is 1 and 2. The default setting is 1;
- Supported parity is ODD parity, event parity and NONE. The default setting is NONE.

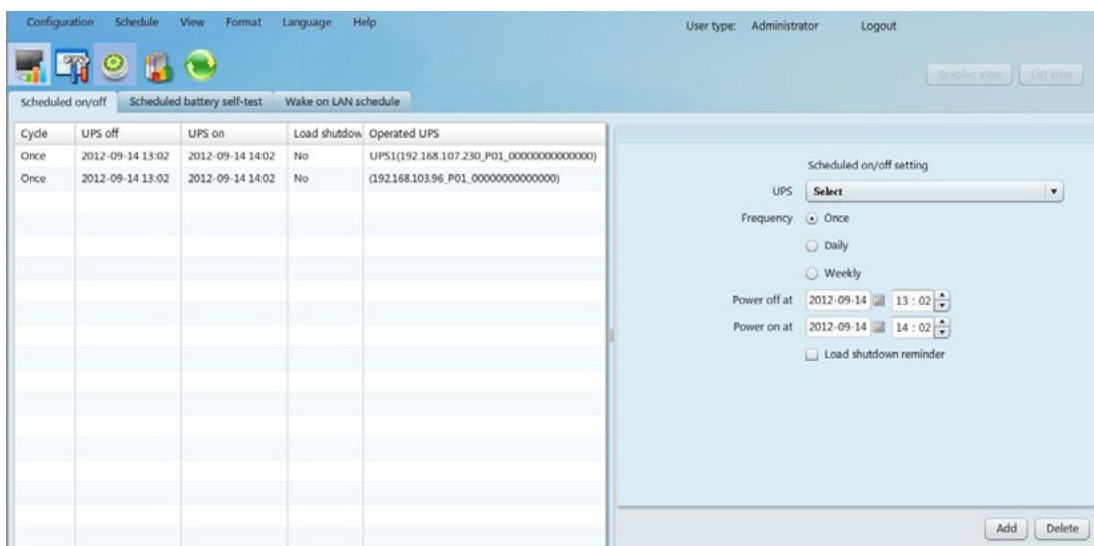
**Note:** This function is only available for the UPS with ModBus communication port.

## Schedule

### Scheduled on/off

Scheduled UPS on/off can be executed once, daily, weekly. Users can select UPS and time parameters. It is recommended to set only one action in the same time. If multiple actions have been applied at the same time, some of these actions may be ignored. Any action will be ignored when the action is not supported by the UPS.

**Step 1** Select "Schedule" >> Scheduled on/off.



**Step 2** Set frequency and setting time on the right column.

**Note:** Please be aware following rules while setting time.

**Once** – Poweroff time should be earlier than poweron time.

**Daily schedule** – Poweroff time should be earlier than poweron time. Poweron time and poweroff time should be set on same day.

**Weekly schedule** – Poweroff time should be earlier than poweron time. Poweron time and poweroff time should be within the same week.

**Step 3** Click “Add” to add task. If task is successfully set, it will display on the task table on the lefthand side. Select specific task and click “Delete” button to delete the task.

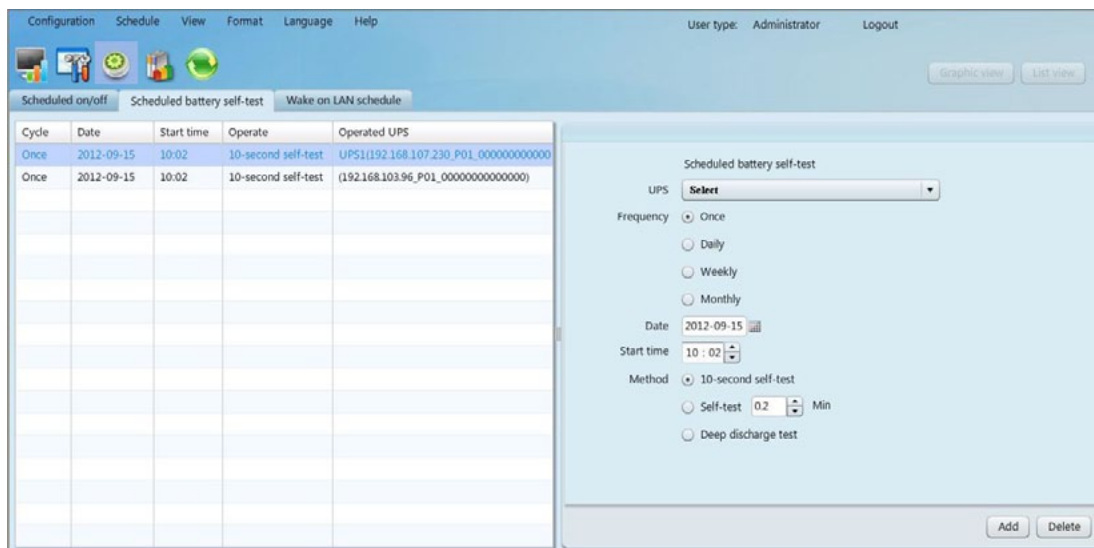
**Note 1:** If there are same plan in the same time, it will execute only one of them.

**Note 2:** If the UPS which accepts scheduled on/off setting is connecting with loads, it can also allow to set load shutdown reminder.

### Scheduled battery selftest

Scheduled battery selftest can be executed once, daily, weekly, or monthly. Users can select UPS and time parameters. It is recommended to set only one action in the same time. If multiple actions have been applied at the same time, some of these actions may be ignored. Any action will be ignored when the action is not supported by the UPS.

Select Control >> Battery SelfTest.

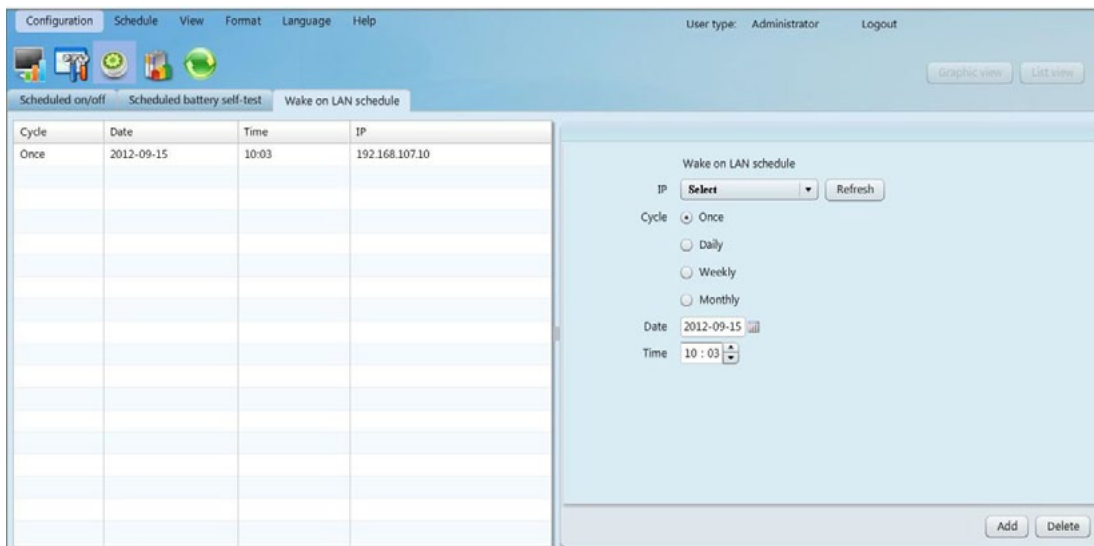


- Select method and time parameters. There are three selftest methods:
  - 10second selftest: Battery will discharge for 10 seconds.
  - Selftest: Users can set battery discharge time for selftest.
  - Deep test: This test will allow battery to discharge until low battery level.
- Click “Add” to add task. If task is successfully added, it will display on the task table on the lefthand side. Select task from table list and click “Delete” button to delete the task.

### Wake on LAN schedule

It supports wakeonLAN schedule for one or multiple computers at once, daily, and weekly frequency.

- Select Schedule >> Wake on LAN schedule.



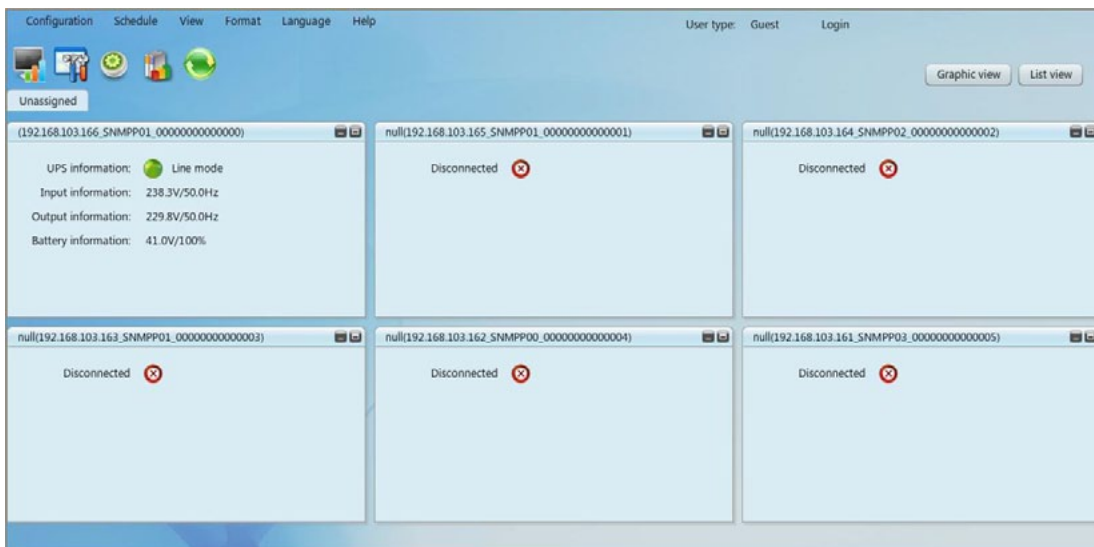
2. Select IP, Cycle, Date and Time, and then click “Add” button to add plan.
3. Select one plan from schedule list, and then click “Delete” to delete plan.

## View

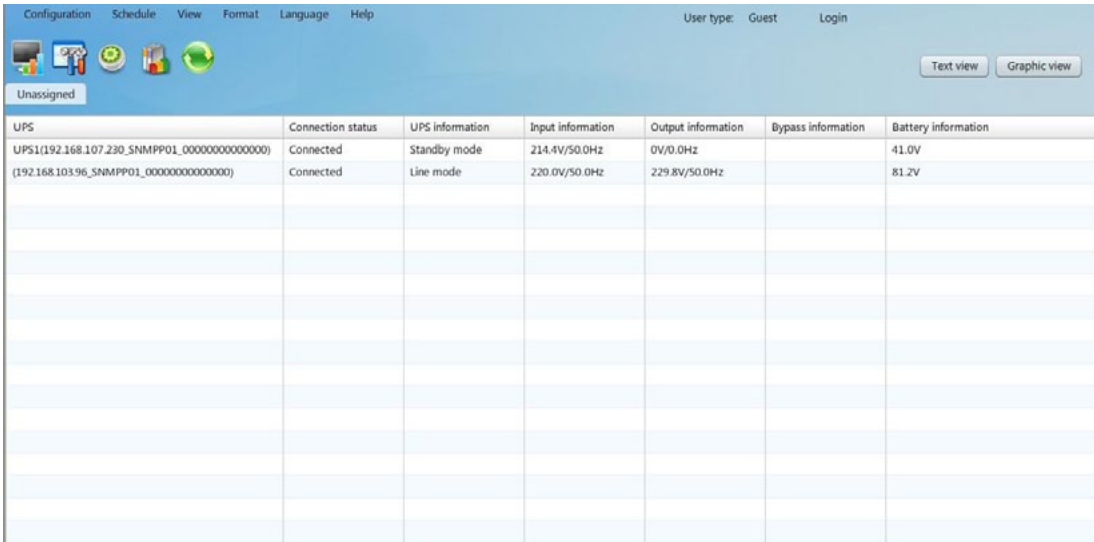
### Centralized monitoring

It includes Text view and Graphic view. Users can exchange view mode by clicking “Text view” button and “Graphic view” button.

- Text view: Each UPS is displayed in the panel form and it shows UPS working status and data. Multiple UPSs will be displayed with multiple UPS panels.



- List view: It will show UPS working data and status in a table.

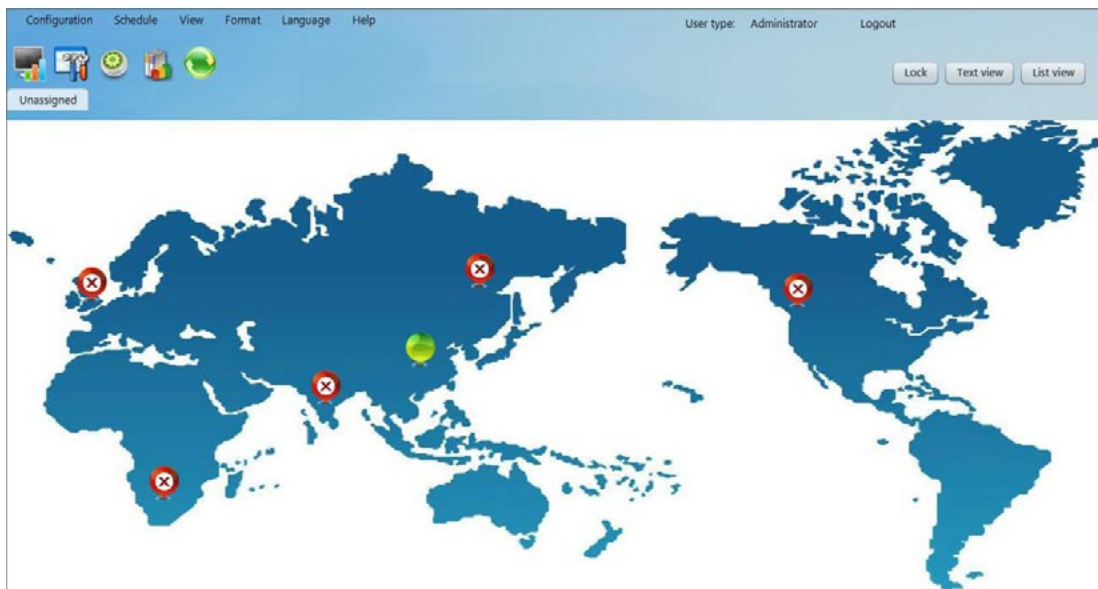


The screenshot shows the 'Text view' of the software interface. At the top, there is a navigation menu with 'Configuration', 'Schedule', 'View', 'Format', 'Language', and 'Help'. The user type is 'Guest' and the user is logged in. Below the menu, there are several icons representing different UPS models. The main area displays a table with the following data:

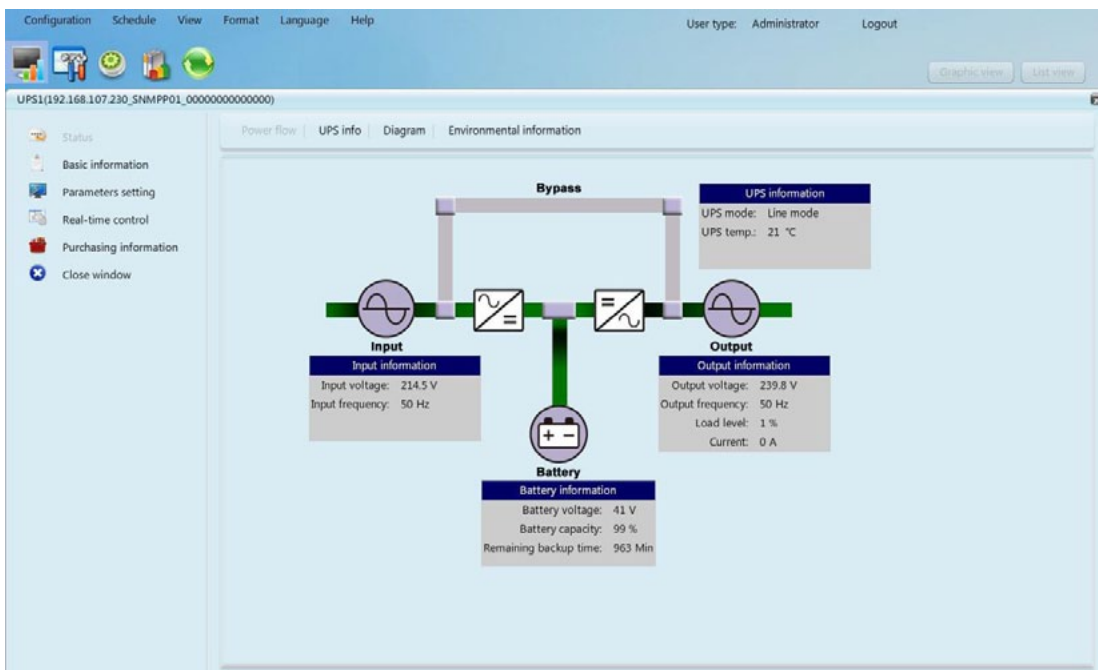
UPS	Connection status	UPS information	Input information	Output information	Bypass information	Battery information
UPS1(192.168.107.230_SNMPP01_00000000000000)	Connected	Standby mode	214.4V/50.0Hz	0V/0.0Hz		41.0V
(192.168.103.96_SNMPP01_00000000000000)	Connected	Line mode	220.0V/50.0Hz	229.8V/50.0Hz		81.2V

- Graphic view: Each UPS is displayed as a simple icon. It shows its status icon with background picture. To avoid any mistakes, it also supports security function. Only when user type is administrator, it's allowed to "unlock" these icons. Then, administrator can drag and drop the icon anywhere freely. The default setting is in "lock" status.





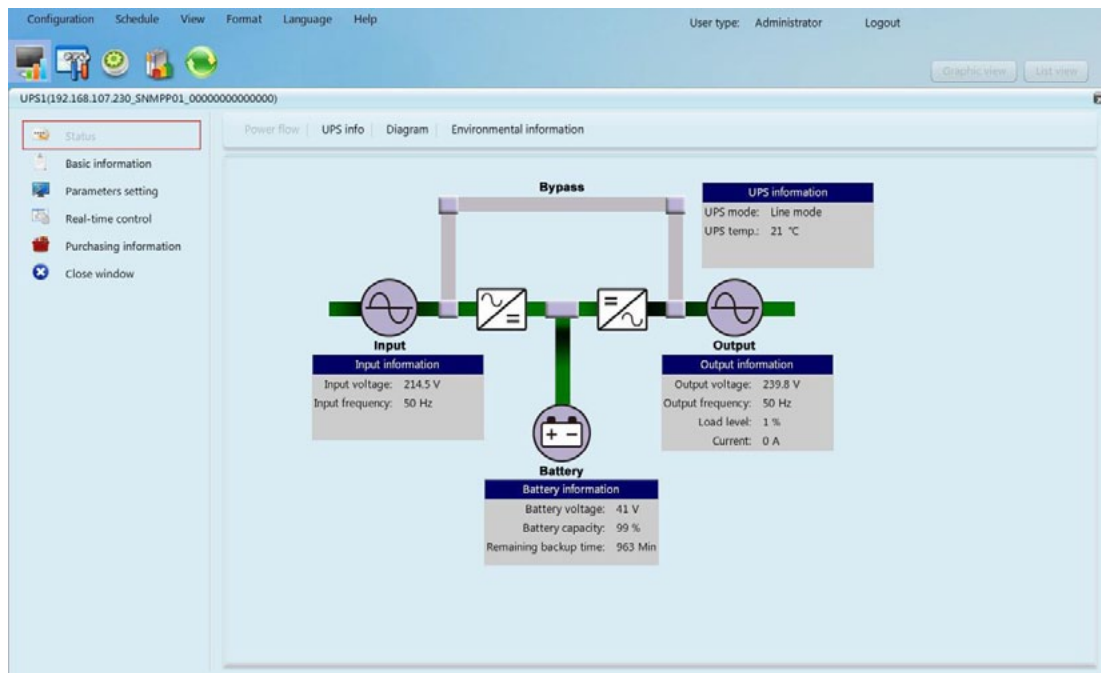
- UPS detail information: On the Text view mode, users can enter individual UPS monitoring interface by double clicking each UPS panel. On the Graphic view mode, users can enter individual UPS monitoring interface by double clicking each UPS icon.



## Status

### Power Flow

Select Status >> Power Flow. In the Power Flow window, it's shown the internal dynamic working flow of the UPS.

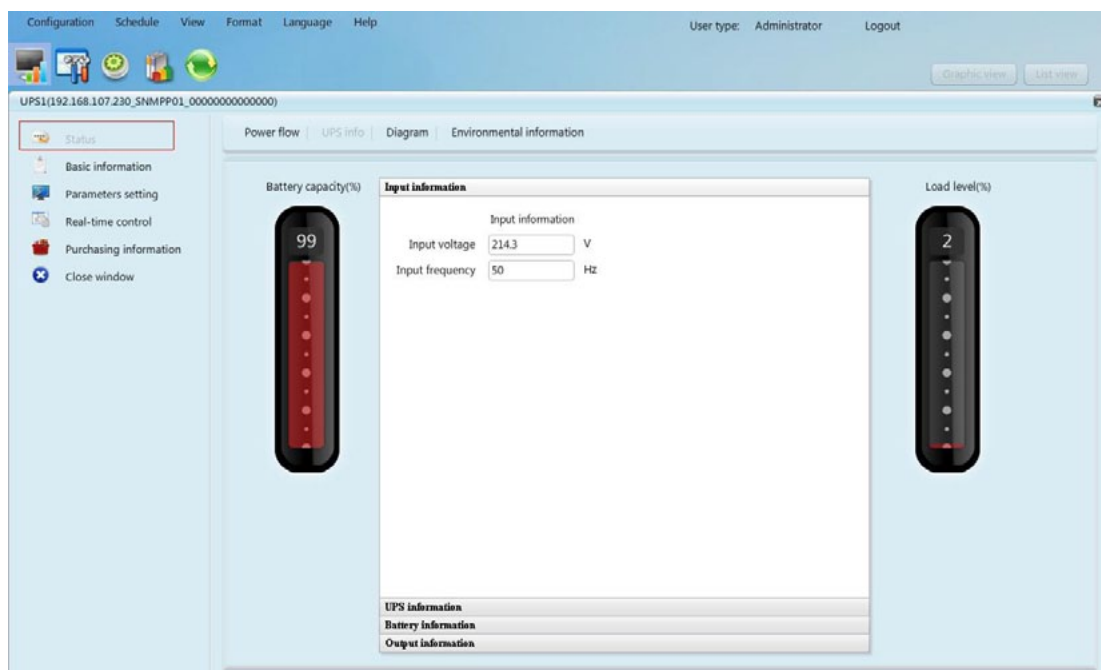


Green/black flow means working well. Grey bar means that the object is present but not in use at the moment. There are four information blocks to display details about input, output, UPS and battery information.

- Input information includes input voltage and input frequency.
- Output information includes output voltage, output frequency, load level, and output current.
- UPS information includes UPS operation mode and UPS temperature.
- Battery information includes battery voltage, battery capacity and remaining backup time.

### UPS Info

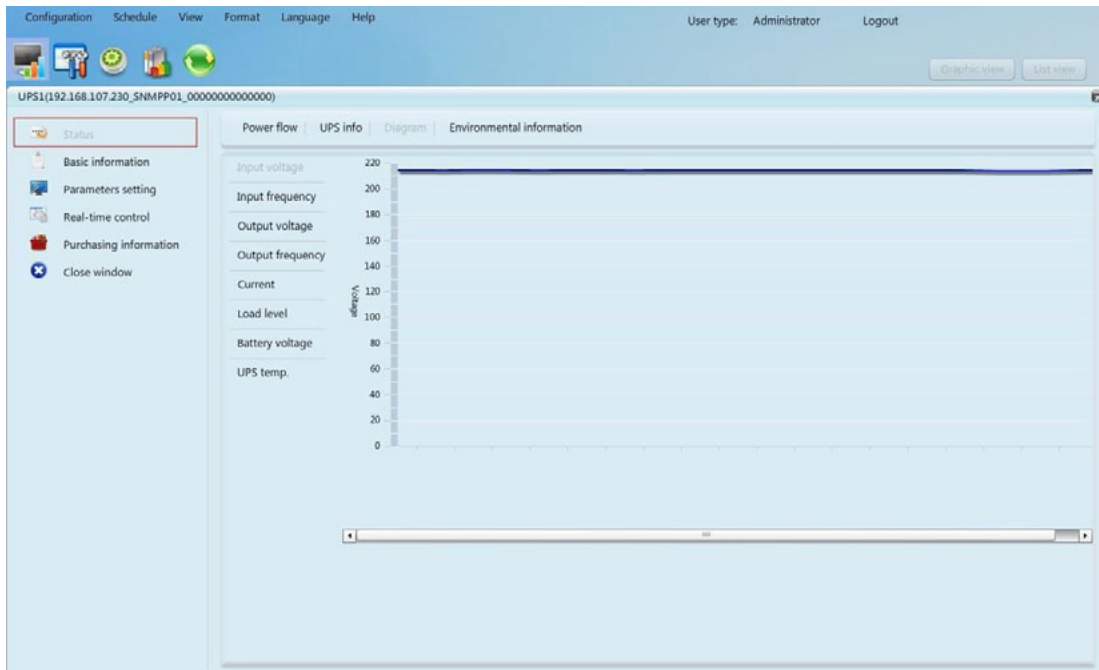
Select Status >> UPS Info. In the “UPS Info” window, it’s shown realtime monitored UPS data including input, output, UPS, and battery information in text and bar.



## Diagram

Select View >> Status >> Diagram. Refer to Diagram 524.

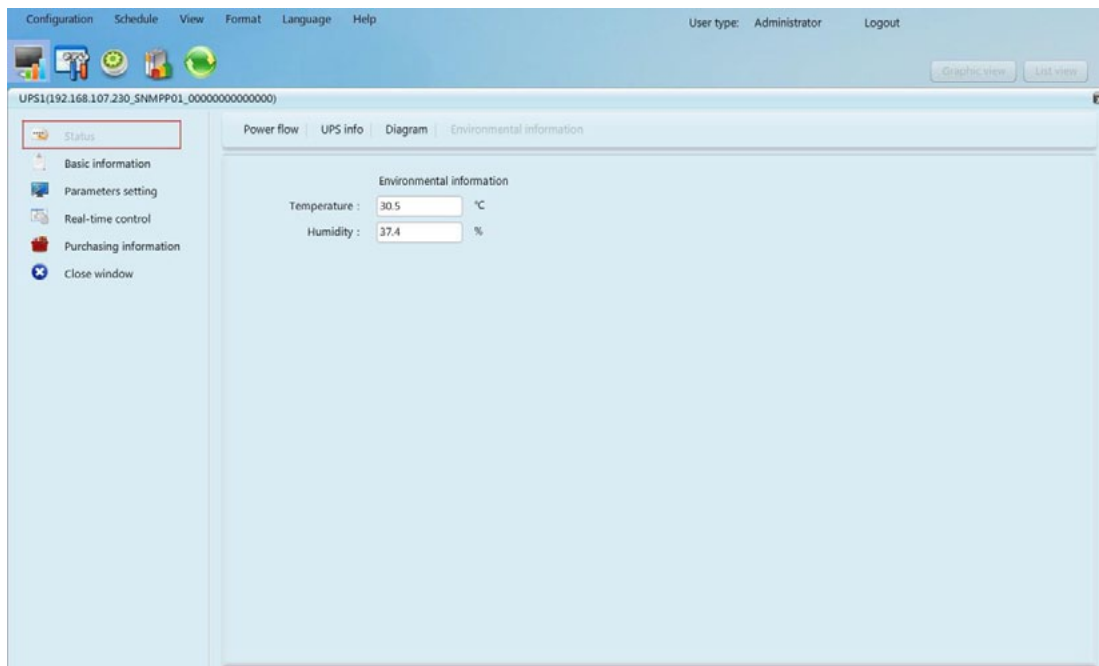
In the Diagram window, it's shown realtime monitored UPS data including voltage, frequency, load, battery, temperature information in diagram.



## Environmental information

In the Environmental information window, it shows the current temperature and humidity.

Select Status >> Environmental information.

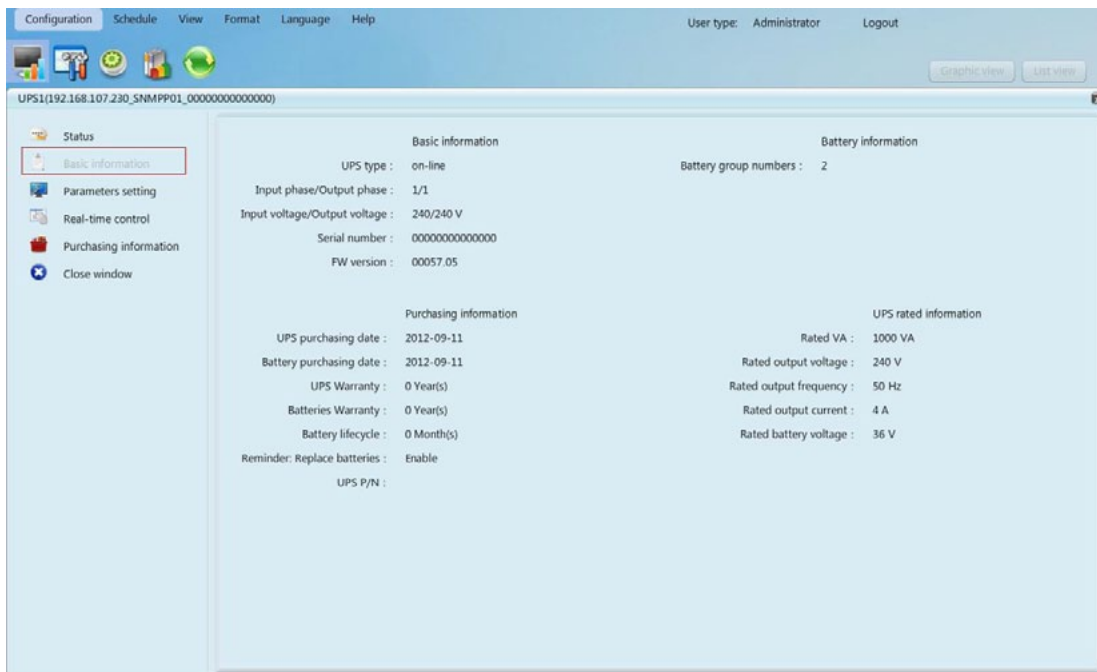




**Note:** This information is only available when SNMP card is connected with Environmental monitoring device (EMD).

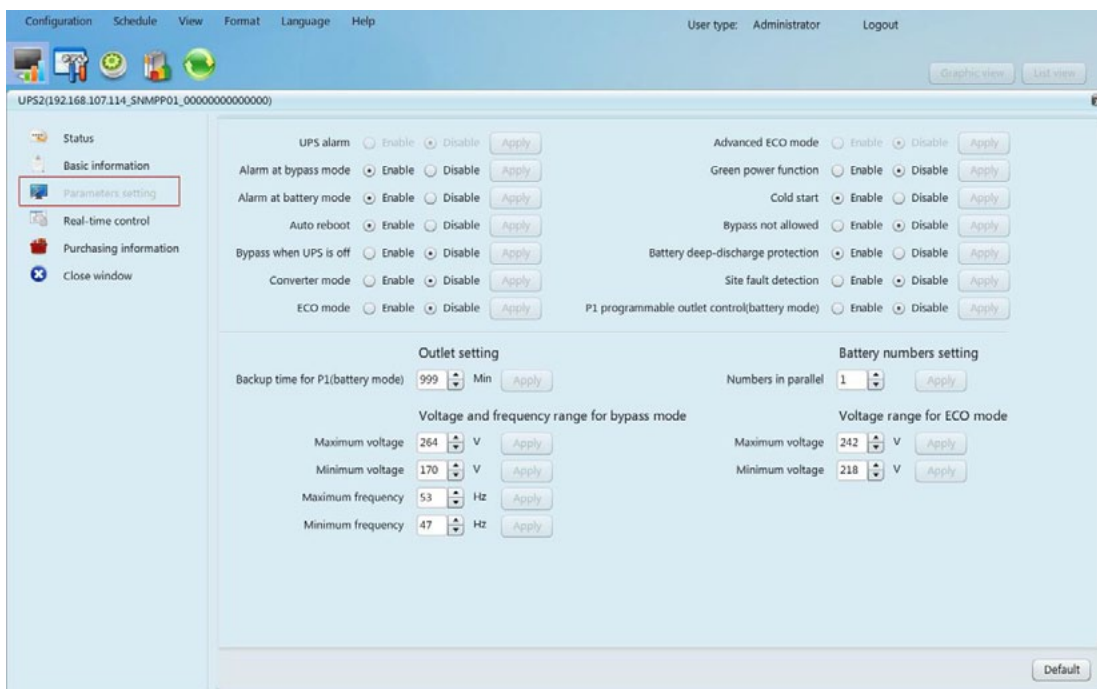
## Basic information

It includes UPS basic information, battery information, UPS purchasing information, and UPS rated information.



## Parameters setting

Some UPS functions can be set and changed via software. Parameter setting includes backup time setting for programmable outlet (P1), battery number setting, voltage and frequency range setting for bypass mode, and voltage range setting for ECO mode.



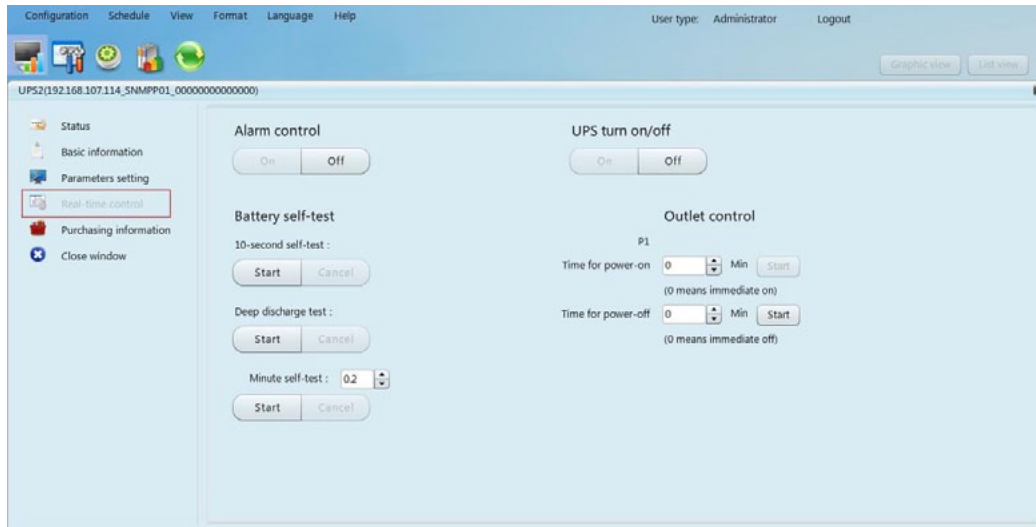
**Note:** Different UPSs may access different parameter setting.

1. Select the functions by clicking “Enable” or “Disable” button. Change the numbers by clicking updown arrows or modify the numbers directly in the number column.
2. Click “Apply” button to save the settings. Each function setting is saved by clicking “Apply” button in each section.
3. Click “Default” button to recover the default setting.

**Note:** Any functions which are not supported by UPS will not be able to access.

- UPS alarm: If enabled, UPS alarm will be activated. Vice versa.
- Alarm at bypass mode: If enabled, UPS alarms when it's working at bypass mode. Vice versa.
- Alarm at battery mode: If disabled, UPS will not alarm when it's working at battery mode. Vice versa.
- Auto reboot: If enabled, UPS will auto recover when AC is recovering. Vice versa.
- Bypass when UPS is off: If enabled, AC will directly provide power to connected devices when UPS is off. Vice versa.
- Converter mode: If enabled, the UPS will operate in converter mode. Vice versa.
- ECO mode: If enabled, the UPS will operate in ECO mode when input voltage is within acceptable range. Vice versa.
- Battery open status check: If enabled, the monitored UPS will check if the battery connection ok or not when UPS is turned on.
- Cold start: If disabled, the UPS can be turned on only when AC is normally connected to UPS. Vice versa.
- Bypass not allowed: If enabled, the UPS will not transfer to bypass mode under any conditions. If disabled, the UPS will be allowed to transfer to bypass mode according to UPS internal setting.
- Battery deep discharge protection: If enabled, the monitored UPS shutdown in accordance with the condition of battery and load on battery mode to protect battery. Vice versa.
- Site fault detection: If enabled, the monitored UPS will beep when the input neutral and hot wires are reversed. Vice versa.
- P1 Programmable outlet control (battery mode): If enabled, when UPS is running at battery mode, it will cut off P1 outlets after backup setting time arrive. If disabled, UPS will provide continuous power to P1 outlets until the battery is running out.
- Outlet setting: Users can set limited backup time for P1 outlets when UPS is on battery mode.
- Battery numbers setting:
  - » Numbers in parallel: set battery numbers in parallel
- Voltage and frequency range for bypass mode: Set acceptable voltage and frequency range in bypass mode
  - » Maximum and minimum voltage: When UPS is on bypass mode and input voltage is out of setting range, UPS will enter battery mode.
  - » Maximum and minimum frequency: When UPS is on bypass mode and input frequency is out of setting range, UPS will enter battery mode.
- Voltage range for ECO mode: Set acceptable voltage range for ECO mode.

## Realtime control

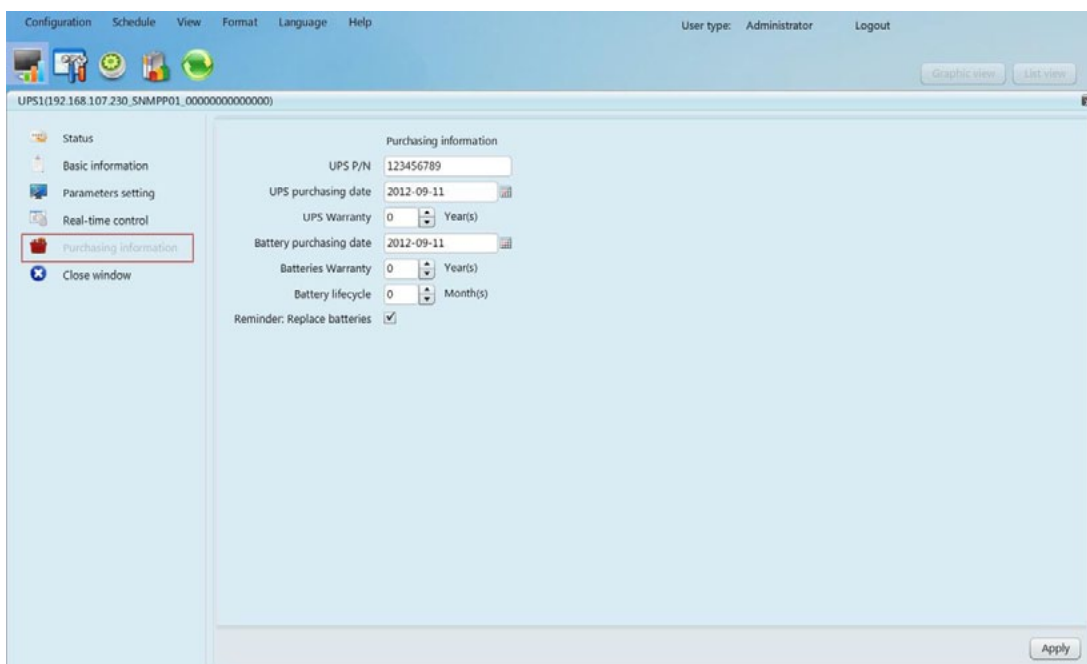


- Choose realtime control function by clicking “Start” button on each function section. You can realtime control the UPS by executing following operation:
  - Alarm control: Click “On” to turn on the UPS alarm and “Off” to turn off the UPS alarm immediately.
  - UPS turn On/Off: Click “On” to turn on the UPS and “Off” to turn off the UPS immediately.
  - Battery SelfTest: Software offers three types of battery selftest: 10second selftest, deep discharge test, and selfdefined selftest. Simply clicking “Start” button from each type. It will execute the selftest immediately.
  - Outlet Control: It will cut off programmable outlets (P1) when setting time arrives. When entering 0 in timer column and click “Start” button, it will cut off outlets immediately when UPS works in battery mode.

**Note:** Different UPSs may access different parameter setting.

## Purchasing information

Users can enter UPS purchasing date, battery purchasing date, UPS warranty time, battery warranty time, battery lifecycle, and battery replacement reminder for future reference.



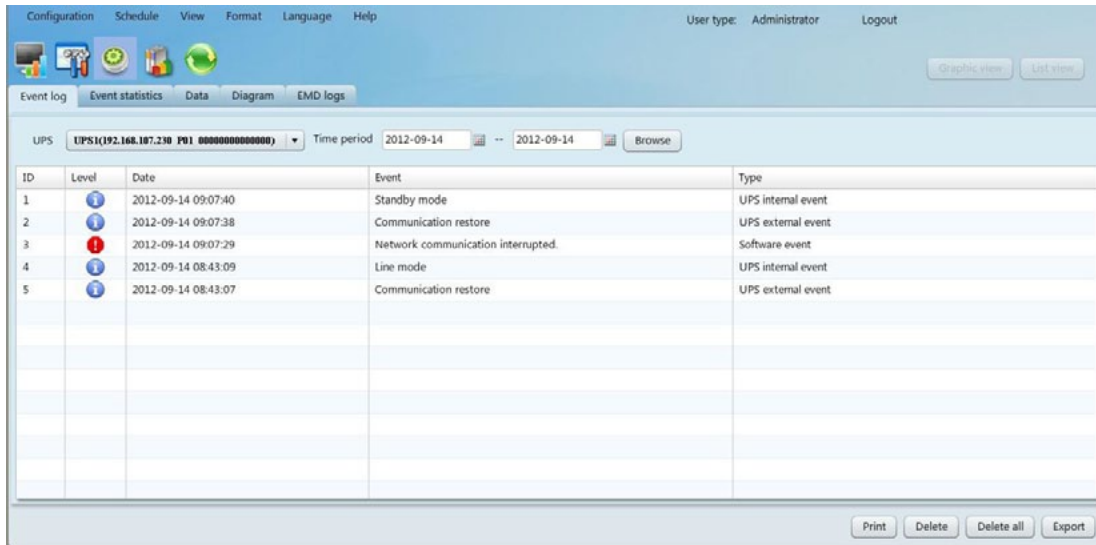
1. Please fill out purchasing information.
2. Click "Apply" button to save all data.

## History

### Event Log

In the Event Log window, it's shown all history events. Users can analyze the history data and improve the current electricity environment according to history data.

1. Select View >> History >> Event Log.



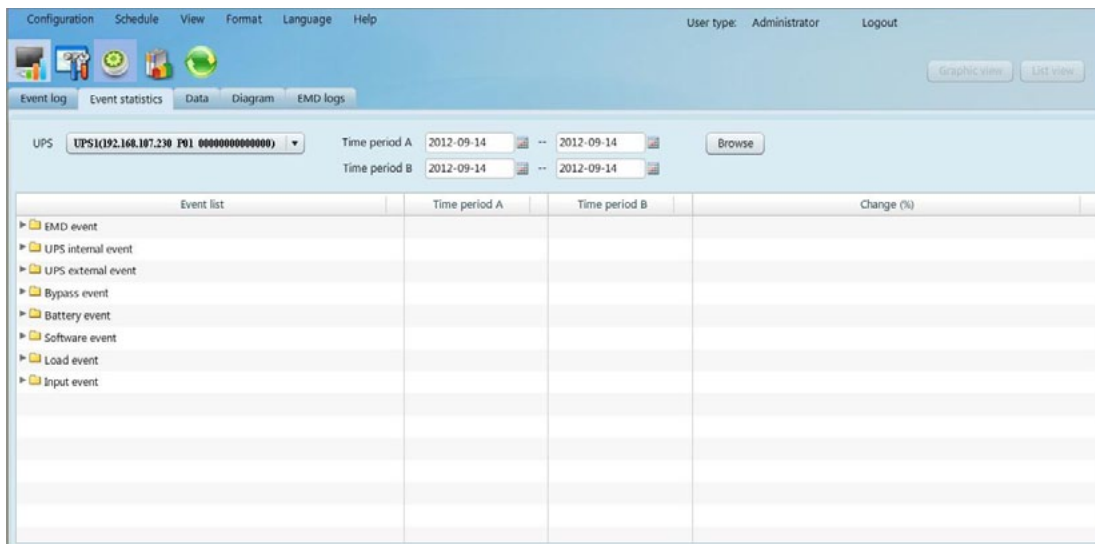
2. Select UPS from com. port list. Users still can retrieve old data saved in the software even though the UPS is no longer connected to local system.
3. Select time period by clicking calendar icon. Then click "Browse" button to get list of all history events during selected period time.
4. Print/Delete/Export function keys
  - "Print": Click "Print" button to print the current event log.
  - "Delete/Delete all": To delete specific event, simply select that event and then click "Delete" button. Or click "Delete all" button to delete all history events on the listed table.
  - "Export": Click "Export" button to save listed table to local PC in .CSV file.

### Event Statistics

It will list down and provide all event statistics for UPSs with software installed based on time period A and time period B, and the change percentage [= 100\*(B/A - 1)%].

**Note:** Event types include UPS internal event, bypass event, battery event, software event, load event, input event, parallel system event and communication event.

**Step 1** Select History >> Event Statistics. Or click shortcut icon .



**Step 2** Select UPS from com. port list. Users still can retrieve old data saved in the software even though the UPS is no longer connected to local system.

**Step 3** Select two periods from clicking “calendar” icon. Then click “Browse” button. The statistics result will be listed in below table according to event types.

Event list	Time period A	Time period B	Change (%)
EMD event			
temperature high	0	0	0
EMD Dry Contact1 alarm	0	0	0
EMD Dry Contact3 alarm	0	0	0
EMD Dry Contact2 alarm	0	0	0
EMD temperature exceeds the upper limit	0	0	0
EMD temperature becomes lower than the lower limit	0	0	0
EMD humidity becomes lower than the lower limit	0	0	0
EMD humidity exceeds the upper limit	0	0	0
EMD Dry Contact4 alarm	0	0	0
EMD smoke alarm	0	0	0
UPS internal event			
UPS external event			
Bypass event			
Battery event			

Click “Print” button to print event statistics.

## Data

In the window of Data, it shows UPS power data in figures during selected period time. Software also offers print, save as, and delete functions. User can customize record interval and default data is recorded in 60 seconds interval.

**Step 1** Select View >> History >> Data.

The screenshot shows the 'Data' window in the ViewPower Pro software. At the top, there are menu options: Configuration, Schedule, View, Format, Language, Help. The user is logged in as 'Administrator'. Below the menu, there are icons for Event log, Event statistics, Data, Diagram, and EMD logs. The 'Data' window is active, showing a table of UPS data. The table has the following columns: Time, Input voltage, Input frequency, Output voltage, Output frequency, Current, Load level, Battery voltage, and UPS temp. The data is for the time period 2012-09-14. The table contains 15 rows of data, showing a consistent input voltage of approximately 215V and a battery voltage of 41V.

Time	Input voltage	Input frequency	Output voltage	Output frequency	Current	Load level	Battery voltage	UPS temp.
2012-09-14 10:03:40	215	50	0	0	0	0	41	21
2012-09-14 10:02:41	213.6	50	0	0	0	0	41	21.2
2012-09-14 10:01:41	214.5	50	0	0	0	0	41	21
2012-09-14 10:00:42	214	50	0	0	0	0	41	21.2
2012-09-14 09:59:43	215.4	50	0	0	0	0	41	21.2
2012-09-14 09:58:44	214.6	50	0	0	0	0	41	21.2
2012-09-14 09:57:45	214.3	50	0	0	0	0	41	21.2
2012-09-14 09:56:46	215	50	0	0	0	0	41	21.2
2012-09-14 09:55:47	215.3	50	0	0	0	0	41	21.2
2012-09-14 09:54:48	216.5	50	0	0	0	0	41	21
2012-09-14 09:53:49	215.9	50	0	0	0	0	41	21.2
2012-09-14 09:52:50	215.5	50	0	0	0	0	41	21.2
2012-09-14 09:51:51	216.3	50	0	0	0	0	41	21.2
2012-09-14 09:50:52	216.8	50	0	0	0	0	41	21.2

**Note:** This screen may be different for different types of UPSs.

**Step 2** Select UPS from com. port list. Users still can retrieve old data saved in the software even though the UPS is no longer connected to local system.

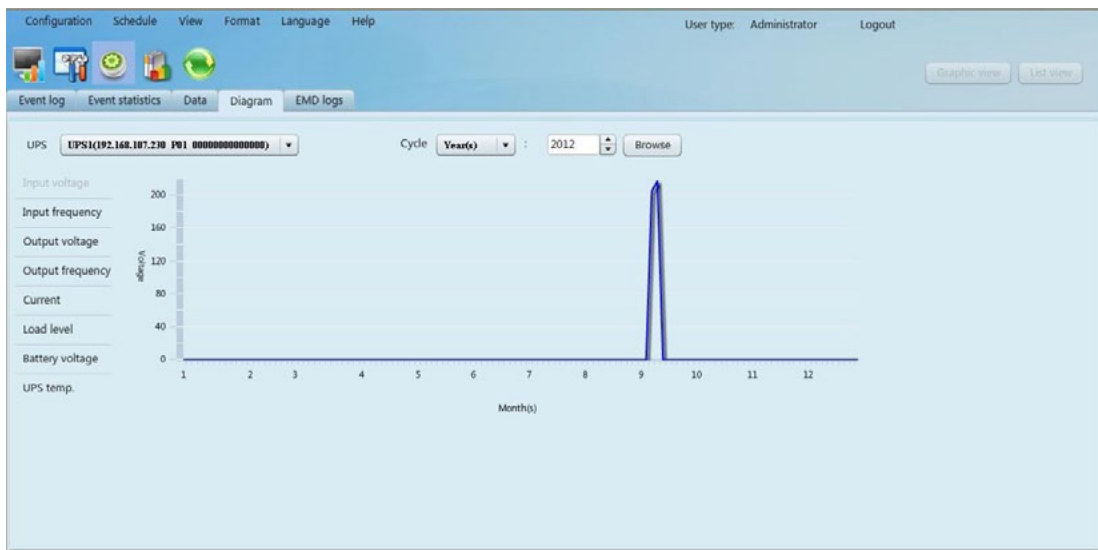
**Step 3** Select the starting time and ending time by clicking calendar icon. Then click “Browse” button to get the data table.

- **“Print”**: Print the listed data table.
- **“Delete”**: Select specific data and click “Delete” button to delete the record.
- **“Delete all”**: Click “Delete all” button to delete all records on the listed table.
- **“Export”**: Click “Export” button to save listed table to local PC in .CSV file.

### Diagram

In the Diagram window, it shows UPS power data in diagram during selected period time. UPS power data includes input voltage, output voltage, input frequency, output frequency, load level, battery capacity, and UPS temperature.

**Step 1** Select View >> History >> Diagram.



**Note:** This screen may be different for different types of UPSs.

**Step 2** Select UPS from com. port list. Users still can retrieve old data saved in the software even though the UPS is no longer connected to local system.

**Step 3** Select cycle and period time. Then click “Browse” button to get the diagram.

**Step 4** Select monitoring parameters on left hand tab to switch diagram.

**EMD Logs**

In the EMD logs window, it shows the environment data in figures detected by environmental monitoring device (EMD) during selected period time.

**Step 1** Select View >> History >> EMD logs.

Time	Temperature	Humidity

**Step 2** Select UPS and select the starting time and ending time by clicking calendar icon. Then click “Browse” button to get the data table. Delete/Delete all.

- **“Delete”**: Select specific data and click “Delete” button to delete the record.
- **“Delete all”**: Click “Delete all” button to delete all records on the listed table.

## ***Format***

### **Temperature Unit**

There are two temperature units for selecting: Centigrade and Fahrenheit. Default setting is centigrade.

### **Date Format**

There are nine formats for date display:

- YYYYMMDD
- YYYY/MM/DD
- YYYY:MM:DD
- MMDDYYYY
- MM/DD/YYYY
- MM:DD:YYYY
- DDDMMYYYY
- DD/MM/YYYY
- DD:MM:YYYY

Default setting is YYYYMMDD.

## ***Language***

ViewPower Pro offers thirteen languages for selection:

- English
- French
- German
- Italian
- Polish
- Portuguese
- Russian
- Spanish
- Ukrainian
- Turkish
- Czech
- Chinese(Simplified)
- Chinese(Traditional)

## ***Help***

### **About**

Click “Help” menu and select “About”. It represents the information about software.

### **Online help**

Click “Help” menu and select “Online help” item. It will open user manual. Before operating software, please read manual carefully.