



RELAY-STND

Relay Card
User's Manual

1. Introduction

1. Introduction

The relay card provides dry contacts for UPS monitoring and status.

2. External connectors defined

Dry contact card provides 10 connections, 7 of which indicate UPS status, 1 for common ground, and 2 for remote UPS shut down.

Relay-STND Parameters:

Parameters		max	Type
Diode	Reverse Voltage VR	5V	
	Forward Current	25mA	16mA
	Pulse Forward Current I _{FP}	1A (100μ pulse,100pps)	
	Forward input voltage	30V	DC:5~12V
Relay contact	Max Switched Voltage	AC:277V	DC:5~12V
		DC:30V	
	Max Switched Current	NO:10A	
		NC:3A	
	Max Switched Power	NO:1400VA 150w	
		NC:850VA 90W	

PIN Out

Normally open:

Pin NO.	Description	Status		Input & output
1	Utility Failure	Relay 1 on	Pin 1 & Pin 8 ON	Output
2	Battery low	Relay 2 on	Pin 2 & Pin 8 OFF	Output
3			Pin 3 & Pin 8 ON	Output
4	Bypass output	Relay 3 on	Pin 4 & Pin 8 ON	Output
5	UPS fault	Relay 4 on	Pin 5 & Pin 8 ON	Output
6	Inverter output	Relay 5 on	Pin 6 & Pin 8 ON	Output
7	Alarm	Relay 6 on	Pin 7 & Pin 8 ON	Output
8	COM			
9	Remote off +			5~12V voltage input
10	Remote off -			

Normally closed:

Pin NO.	Description	Status		Input & output
1	Utility Failure	Relay 1 on	Pin 1 & Pin 8 OFF	Output
2	Battery low	Relay 2 on	Pin 2 & Pin 8 ON	Output
3			Pin 3 & Pin 8 OFF	Output
4	Bypass output	Relay 3 on	Pin 4 & Pin 8 OFF	Output
5	UPS fault	Relay 4 on	Pin 5 & Pin 8 OFF	Output
6	Inverter output	Relay 5 on	Pin 6 & Pin 8 OFF	Output
7	Alarm	Relay 6 on	Pin 7 & Pin 8 OFF	Output
8	COM			
9	Remote off +			5~12V voltage input
10	Remote off -			

Connector pin instructions:**Normally open:**

Pin number	Description	Reason for fault
Pin 1 & 8 ON	Mains abnormal	Mains frequency or voltage abnormal
Pin 2 & 8 OFF Pin 3 & 8 ON	Battery low	Battery low
Pin 4 & 8 ON	Bypass output	UPS output through bypass
Pin 5 & 8 ON	UPS fault	Rectifier fault Inverter fault Over temperature Short circuit
Pin 6 & 8 ON	Inverter output	UPS inverter output
Pin 7 & 8 ON	UPS alarm	Rectifier fault Inverter fault Over temperature Short circuit
Pin 9 connects to 5-12V power Pin 10 connects to ground	Remote OFF	Remote OFF

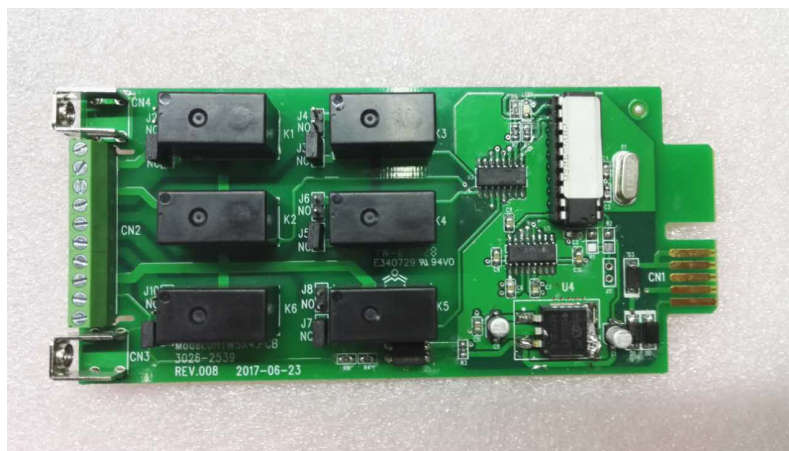
Normally closed:

Pin number	Description	Reason for fault
Pin 1 & 8 OFF	Mains abnormal	Mains frequency or voltage abnormal
Pin 2 & 8 ON Pin 3 & 8 OFF	Battery low	Battery low
Pin 4 & 8 OFF	Bypass output	UPS output through bypass
Pin 5 & 8 OFF	UPS fault	Rectifier fault Inverter fault Over temperature Short circuit
Pin 6 & 8 OFF	Inverter output	UPS inverter output
Pin 7 & 8 OFF	UPS alarm	Rectifier fault Inverter fault Over temperature Short circuit
Pin 9 connects to 5-12V power Pin 10 connects to ground	Remote OFF	Remote OFF

3. Internal connectors defined:

Total of 26 internal connectors, 4 are valid connectors. They are Pin 1, 2, 3, 4 are shown in Picture 1 below;

- Pin 1 (at the back of Pin2): Ground
- Pin 2: 12V power
- Pin 3: (at the back of Pin4): Send
- Pin 4: Receive



Picture 1